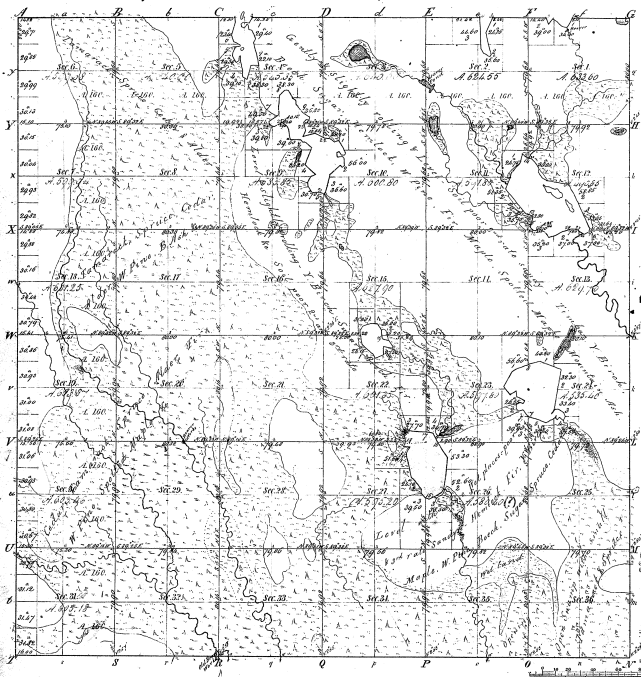


Township 37<sup>o</sup> 47' N. Range 16<sup>o</sup> W. Mer. Mich.



Total number of Acres 22,241.43

Survey designated	By whom surveyed	Date of Contract	Journal of Survey	When finished	When returned to the Survey Office
Township lines	W. A. Burt	April 1 1861	H. 75 47	3 <sup>rd</sup> Decr 1861	
Subdivisions	W. A. Burt	April 22 1860	70 70 48	3 <sup>rd</sup> Decr 1860	

The above copy of Township 37<sup>o</sup> 47' North of Range 16<sup>o</sup> West of the Principal Meridian Michigan is hereby confirmed to the field notes of the survey thereon on file in this Office which have been examined and approved.

Surveyor General's Office,  
Detroit, Mar. 6 1862

Boundaries of  
Twp. 37<sup>o</sup> 47' N. R. 16<sup>o</sup> W. Mer. Mich.

374

37-92

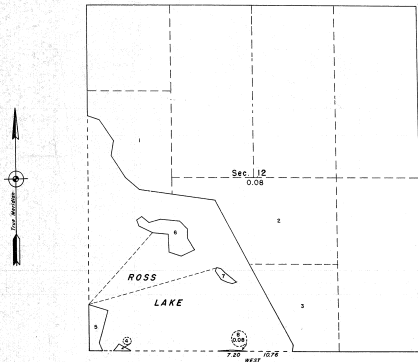
W. A. Burt  
Apr. 22 1860

Surveyor General's Office  
Detroit

TOWNSHIP 47 NORTH, RANGE 16 WEST, MICHIGAN MERIDIAN, MICHIGAN

SUPPLEMENTAL PLAT OF SECTION 12

37-9 ③



This supplemental plat, based upon the plat approved March 2, 1951, and the field notes thereto, has been prepared to provide an acreage and lot designation for an area situated in section 12 in the main block of Ross Lake which has not been reported on previous plats.

For areas and previous survey information not shown herein, reference should be made to the plat approved March 2, 1951, and the plat accepted February 12, 1955.

UNITED STATES DEPARTMENT OF THE INTERIOR  
BUREAU OF LAND MANAGEMENT  
Washington, D. C. June 15, 1965

This plat, showing new lottings, is based upon the official records, and having been carefully prepared in accordance with the regulations, is hereby accepted.

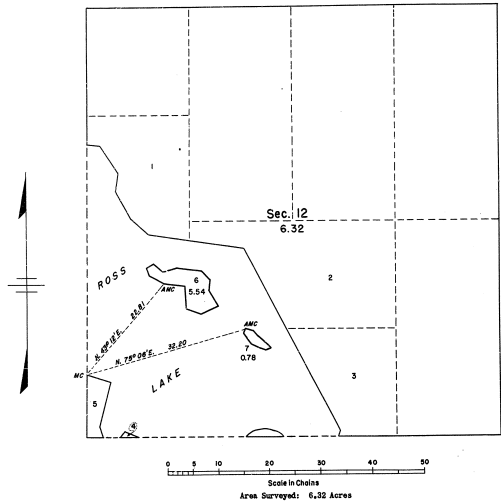
For the Director

*E. J. [Signature]*  
Chief, Division of Surveying

Area surveyed: 0.08 Acres

TOWNSHIP 47 NORTH, RANGE 16 WEST OF THE MICHIGAN MERIDIAN, MICHIGAN  
 SURVEY OF TWO ISLANDS IN ROSS LAKE, SECTION 12

37-9



This plat represents the survey of two islands in Ross Lake which were not included in the original survey of the township which is represented on the plat approved March 5, 1851.

Surveyed by Norville E. Shearer, Cartographer (Cadastral), on September 1, 1906, under Special Instructions dated April 20, 1905 and Supplemental Special Instructions dated August 2, 1905 for Group 65, Michigan.

UNITED STATES DEPARTMENT OF THE INTERIOR  
 BUREAU OF LAND MANAGEMENT  
 Washington, D. C. February 17, 1906

This plat is strictly conformable to the approved field notes, and the survey, having been correctly executed in accordance with the requirements of law and the regulations of this Bureau, is hereby accepted.

For the Director  
*Carl A. Harrington*  
 Cadastral Engineering Staff Officer