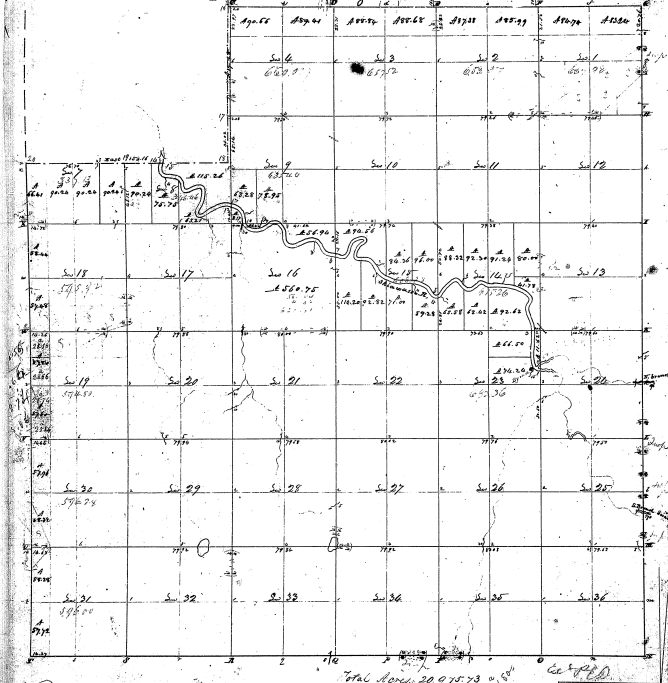


Township N.V. 34 N., Range N.W. 6 W. of the 1st Meridian

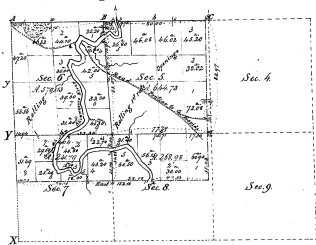


Present to a contract with and instructions from Congress for surveying lands of the United States lying within the range  
 shown adjacent to and through the above township and as early as in his next work  
 and found both natural and artificial as we reported on said plat and further in this case notes on same to be  
 and returned with this plat into the Surveyors office - Certified true 1857. 10. 16. 1858

John Mullin D.

21-21  
 29-21

Township N<sup>o</sup> V N. Range N<sup>o</sup> IV E. Mer. Mich.  
*Ketch-i-wan-dunge-nink* Indian Reserve



29-21

29-21 (2)

Surveyed in May 1864, by John E. Mallott, Deputy Surveyor, under instructions of May 25/64.  
 Subdivisions  $3^2$   $2^2$   $2^2$   $4^2$   $2^2$  Total  $72$   $32$   $22$   
 Total number of acres 1725.63

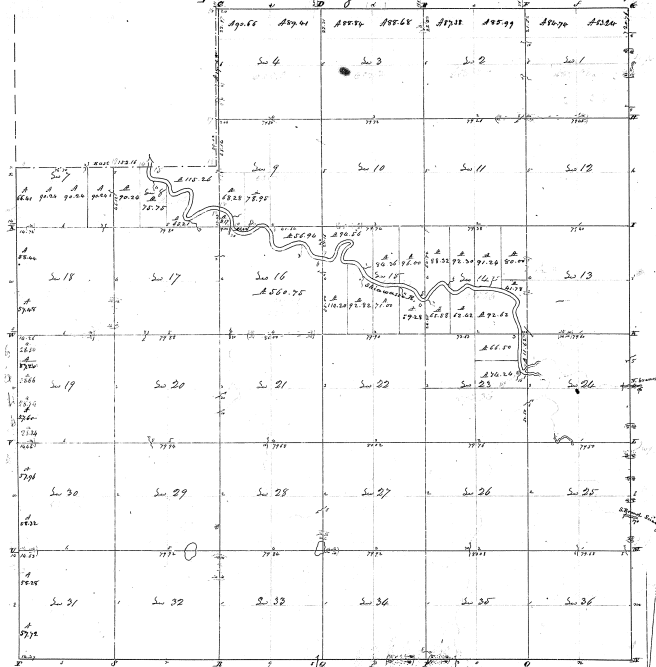


The above Map of part of Ketch-i-wan-dunge-nink Reserve is S. S. E. E. of the Territorial Boundary. Michigan is strictly conformable to the field notes of the survey thereof on file in this office, which have been examined and approved.  
 Surveyor General's Office,  
 Detroit July 1. 1864.

Lucius Lyon, Sur. Genl.

Township N.V. 20 N., Range N.W. 20 W. of the 6th Meridian T. 20

37



21-21

29-21

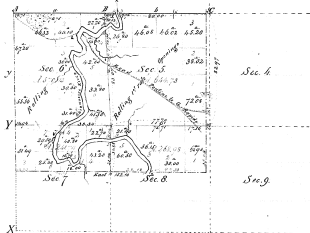
Area 2012 285 75 73

Document to a contract with and returns from Edward J. Stevens of the United States having title the survey  
 I have advanced land out (and through) the above described and so that in his land books  
 and bound both natural and artificial as is represented on said plat and described in the field notes made thereof  
 and returned with this plat into the Treasury of the United States for the use of the Surveyors

John Mullett D. S.

Township N<sup>o</sup> V N. Range N<sup>o</sup> IV E. Mer. Mich.

Ketch-i-wan-dauge-nink Indian Reserve



29-21

29-21

Surveyed in May 1868, by John H. Muller, Deputy Surveyor, under instructions of May 27/68  
 Subdivisions 3<sup>o</sup> 4<sup>o</sup> 5<sup>o</sup> 6<sup>o</sup> 7<sup>o</sup> 8<sup>o</sup> Total 30 30 30  
 Total number of acres 1720 63

Scale of Miles to an Inch

2000

The plan plat of part of Ketch-i-wan-dauge-nink Reserve in T. 5 N. R. 4 E. of  
 the Principal Meridian Michigan is hereby confirmed to the field notes  
 of the survey thereof on file in this Office, which have been examined and approved.  
 Survey General's Office,  
 Detroit July 1. 1868

Lewis Lyon, Sur. Genl