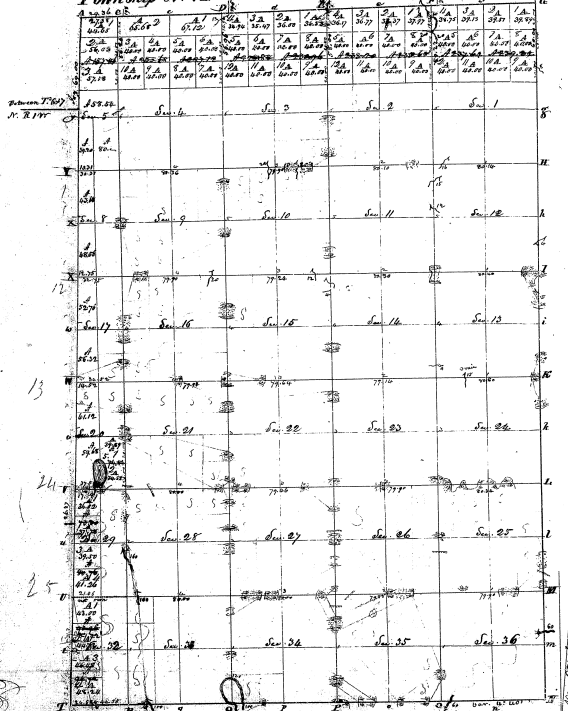


Township N° VI North, Range N° I East, Mer. Mic. Tor.



Section 1  
N. R. 1 W.

13

24

25

Surveyed in March 1826 by Joseph Wampler, S.D.

Section	Acres	Value
Sec 1	36.00	3.24
Sec 2	36.00	3.24
Sec 3	36.00	3.24
Sec 4	36.00	3.24
Sec 5	36.00	3.24
Sec 6	36.00	3.24
Sec 7	36.00	3.24
Sec 8	36.00	3.24
Sec 9	36.00	3.24
Sec 10	36.00	3.24
Sec 11	36.00	3.24
Sec 12	36.00	3.24
Sec 13	36.00	3.24
Sec 14	36.00	3.24
Sec 15	36.00	3.24
Sec 16	36.00	3.24
Sec 17	36.00	3.24
Sec 18	36.00	3.24
Sec 19	36.00	3.24
Sec 20	36.00	3.24
Sec 21	36.00	3.24
Sec 22	36.00	3.24
Sec 23	36.00	3.24
Sec 24	36.00	3.24
Sec 25	36.00	3.24
Sec 26	36.00	3.24
Sec 27	36.00	3.24
Sec 28	36.00	3.24
Sec 29	36.00	3.24
Sec 30	36.00	3.24
Sec 31	36.00	3.24
Sec 32	36.00	3.24
Sec 33	36.00	3.24
Sec 34	36.00	3.24
Sec 35	36.00	3.24
Sec 36	36.00	3.24
<b>Total</b>	<b>1296.00</b>	<b>116.64</b>

29-17

29-17

