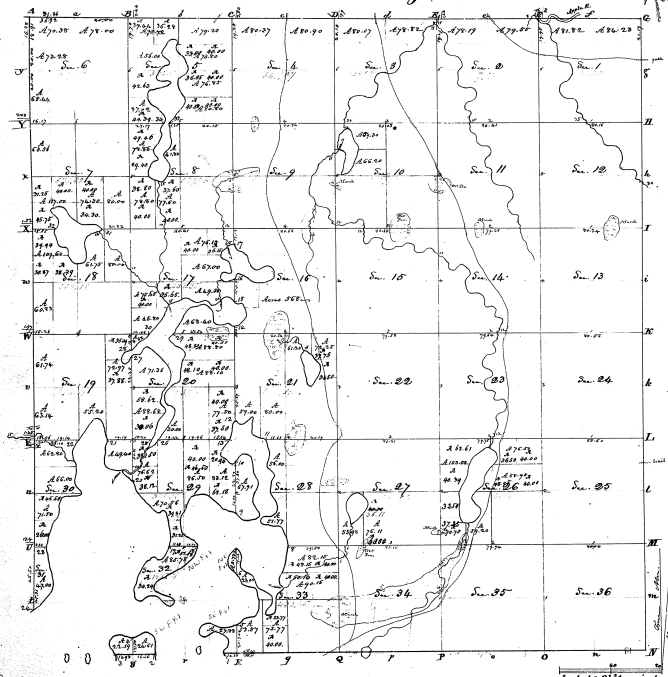


Township N. 13. North, Range N. 1 West Mer. (Mis. Ter.)



Surveyed in September 1830 & January 1831. by Jefferson A. Bell

Sections		Contents	
Acres	Acres	Acres	Acres
1	25	175	71
2	26	80	80
3	27	61	61
4	28	80	80
5	29	80	80
6	30	80	80
7	31	80	80
8	32	80	80
9	33	80	80
10	34	80	80
11	35	80	80
12	36	80	80
13	37	80	80
14	38	80	80
15	39	80	80
16	40	80	80
17	41	80	80
18	42	80	80
19	43	80	80
20	44	80	80
21	45	80	80
22	46	80	80
23	47	80	80
24	48	80	80
25	49	80	80
26	50	80	80
27	51	80	80
28	52	80	80
29	53	80	80
30	54	80	80
31	55	80	80
32	56	80	80
33	57	80	80
34	58	80	80
35	59	80	80
36	60	80	80

7-30

John A. Bell

