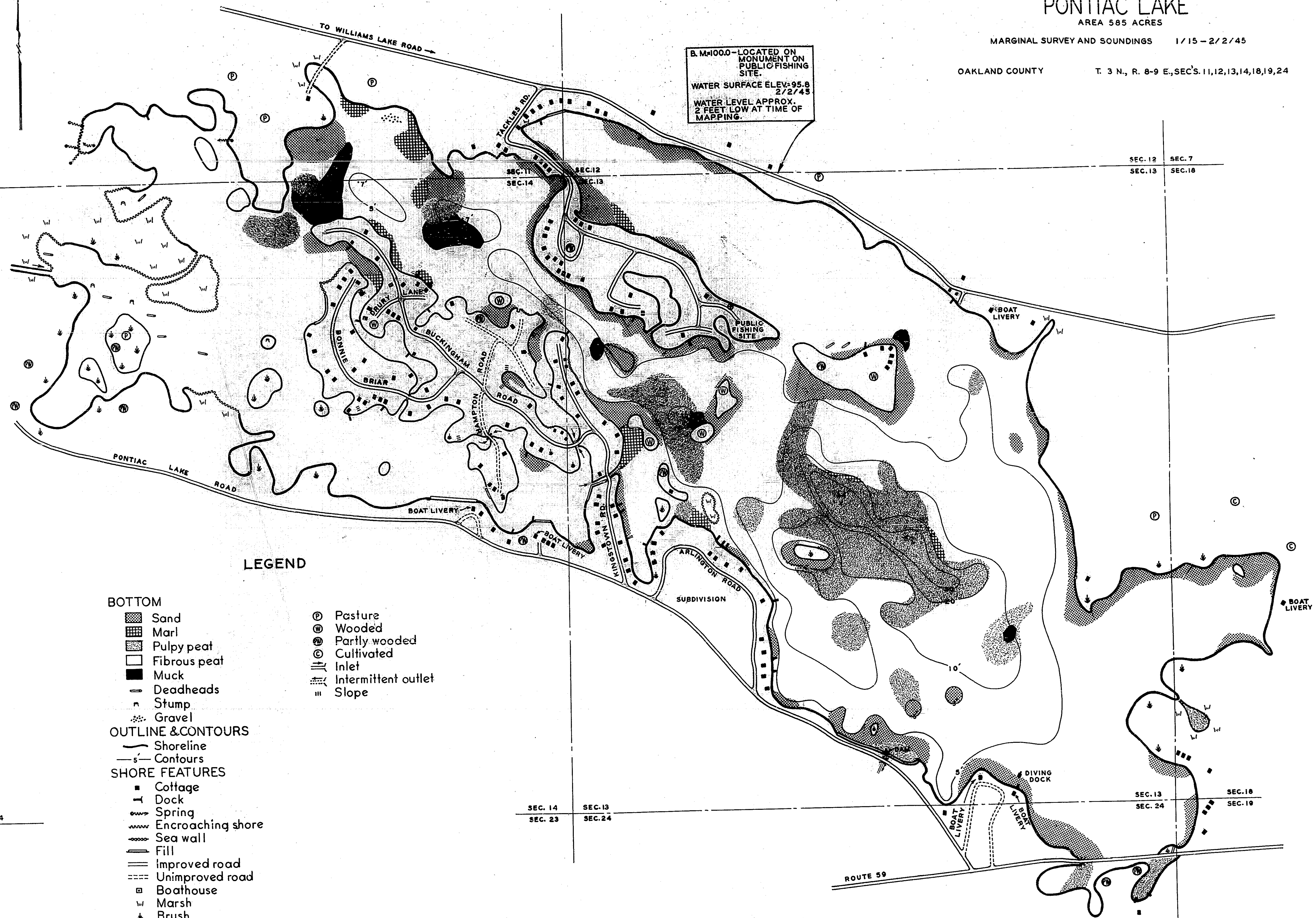


LAKE INVENTORY MAP
PONTIAC LAKE
 AREA 585 ACRES

MARGINAL SURVEY AND SOUNDINGS 1/15 - 2/2/45

OAKLAND COUNTY T. 3 N., R. 8-9 E., SEC'S. 11, 12, 13, 14, 18, 19, 24

B. M. 1000 - LOCATED ON MONUMENT ON PUBLIC FISHING SITE.
 WATER SURFACE ELEV. 95.8
 2/2/45
 WATER LEVEL APPROX. 2 FEET LOW AT TIME OF MAPPING.



LEGEND

BOTTOM

- Sand
- ▨ Marl
- ▩ Pulpy peat
- Fibrous peat
- Muck
- Deadheads
- Stump
- Gravel

- ⊙ Pasture
- ⊙ Wooded
- ⊙ Partly wooded
- ⊙ Cultivated
- Inlet
- Intermittent outlet
- Slope

OUTLINE & CONTOURS

- Shoreline
- Contours

SHORE FEATURES

- Cottage
- Dock
- Spring
- Encroaching shore
- Sea wall
- Fill
- Improved road
- Unimproved road
- Boathouse
- Marsh
- Brush

