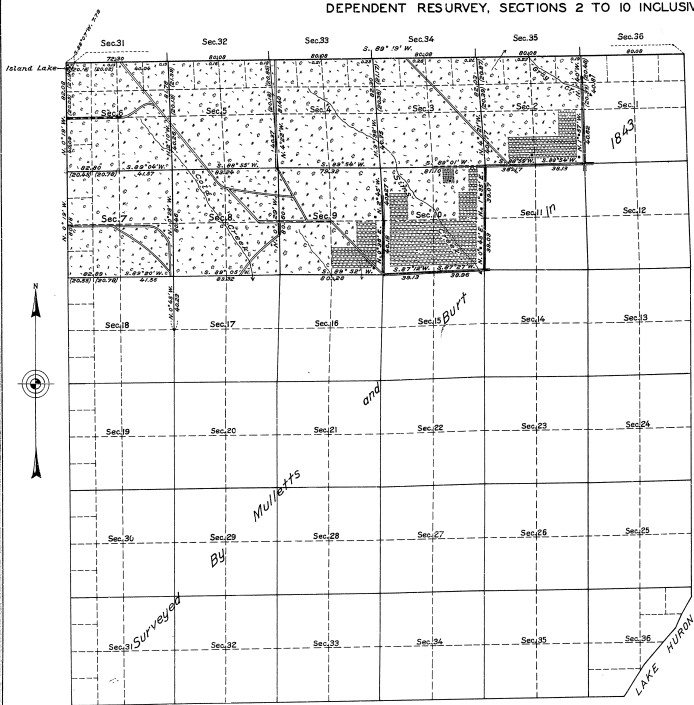




TOWNSHIP NO.22 NCRTH, RANGE NO.7 EAST, OF THE MICHIGAN MERIDIAN, MICHIGAN.  
DEPENDENT RESURVEY, SECTIONS 2 TO 10 INCLUSIVE.



22-35

22-35

MEMORANDUM  
THIS PLAT OF THE RESURVEY OF SECTIONS 2 TO 10, INCLUSIVE, TOWNSHIP 22 NORTH, RANGE 7 EAST, DELINEATES A RETRACEMENT AND REESTABLISHMENT OF THE LINES OF THE ORIGINAL SURVEY AS SHOWN UPON THE PLAT APPROVED JANUARY 10, 1864, IN THEIR TRUE ORIGINAL POSITIONS ACCORDING TO THE BEST AVAILABLE EVIDENCE OF THE POSITION OF THE ORIGINAL CORNERS. ALL DIFFERENCES BETWEEN THE MEASUREMENTS SHOWN UPON THE ORIGINAL PLAT AND THOSE DERIVED IN THE RETRACEMENT HAVE BEEN DISTRIBUTED PROPORTIONALLY BETWEEN ACCEPTED CORNERS IN ACCORDANCE WITH SURVEYING RULES. REFERENCE WILL BE MADE TO THE ORIGINAL PLAT FOR THE SHOWING OF AREAS AND MORE DETAILED DESCRIPTIONS OF THE VARIOUS SMALLER SUBDIVISIONS.

THE RESURVEY WAS EXECUTED PURSUANT TO AUTHORITY CONTAINED IN GENERAL LAND OFFICE LETTER 1362938 "E", DATED FEBRUARY 20, 1930, WHICH BEARS DEPARTMENTAL APPROVAL UNDER DATE OF FEBRUARY 24, 1930.

OFFICE OF U.S. SUPERVISOR OF SURVEYS,  
DENVER, COLORADO, FEBRUARY 21, 1933.

THE ABOVE PLAT OF SECTIONS 2 TO 10, INCLUSIVE, TOWNSHIP NO. 22 NORTH, RANGE NO. 7 EAST OF THE MICHIGAN MERIDIAN, IN THE STATE OF MICHIGAN, IS STRICTLY CONFORMABLE TO THE FIELD NOTES OF THE SURVEY THEREOF, WHICH HAVE BEEN EXAMINED AND APPROVED.

*Wm. H. Denison*  
U.S. SUPERVISOR OF SURVEYS.

DEPARTMENT OF THE INTERIOR,  
GENERAL LAND OFFICE,  
WASHINGTON, D. C., MARCH 14, 1933.

THE RESURVEY REPRESENTED BY THIS PLAT, HAVING BEEN CORRECTLY EXECUTED IN ACCORDANCE WITH THE REQUIREMENTS OF LAW AND THE REGULATIONS OF THIS OFFICE, IS HEREBY ACCEPTED.

*J. D. Anderson*  
ACTING ASSISTANT COMMISSIONER.

SCALE: 40 CHAINS TO AN INCH. AREA RESURVEYED, 5,790.26 ACRES.

LINES DESIGNATED	BY WHOM SURVEYED	GROUP NO.	DATE	MILEAGE MLS. CHS.	WHEN SURVEYED	
					BEGUN	COMPLETED
SUBDIVISIONAL	GUY R. VEAL, U.S.C. ENGINEER.	24	MAY 8, 1931.	18 56.12	JULY 1, 1931.	AUG. 14, 1931.