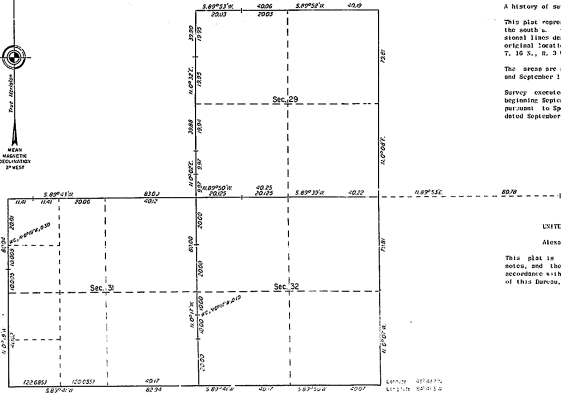


13-19

TOWNSHIP 16 NORTH, RANGE 3 WEST, OF THE MICHIGAN MERIDIAN, MICHIGAN.
DEPENDENT RESURVEY



A history of surveys is contained in the field note record.

This plan represents the dependent resurvey of a portion of the north $\frac{1}{2}$ sec. 1, r. 3 W. and a portion of the subdivision line designed to retrace the corners in their true original location according to the best available evidence. T. 16 N., R. 3 W., Michigan Meridian, Michigan.

The areas are as shown on the plats approved June 15, 1820 and September 11, 1821.

Survey executed by Benjamin T. Ritter, Cadastre Surveyor, beginning September 16, 1881, and completed October 2, 1881, pursuant to Special Instructions for Group 62, Michigan, dated September 14, 1881.

UNITED STATES DEPARTMENT OF THE INTERIOR
BUREAU OF LAND MANAGEMENT
Alexandria, Virginia January 18, 1882

This plan is strictly conformable to the approved field notes, and the survey, having been correctly executed in accordance with the requirements of law and the regulations of this Bureau, is hereby accepted.

For the Director
Benjamin T. Ritter
Chief Cadastre Surveyor
Chicago, Kansas Office

