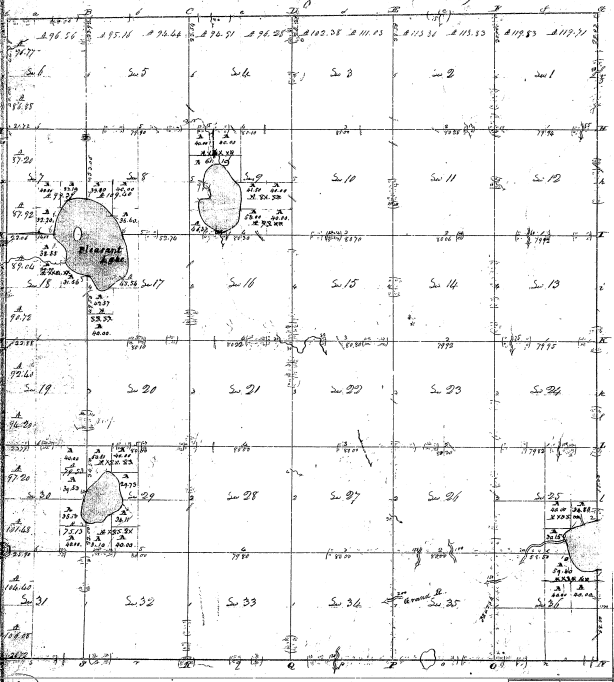


Township N. I. south, Range N. I. east (part of)



Surveyed in Dec. 1895 by Joseph Bramble L.S.

97.67	119	31	19	320
97.68	80	31	19	320
97.69	80	31	19	320
97.70	80	31	19	320
97.71	80	31	19	320
97.72	80	31	19	320
97.73	80	31	19	320
97.74	80	31	19	320
97.75	80	31	19	320
97.76	80	31	19	320
97.77	80	31	19	320
97.78	80	31	19	320
97.79	80	31	19	320
97.80	80	31	19	320
97.81	80	31	19	320
97.82	80	31	19	320
97.83	80	31	19	320
97.84	80	31	19	320
97.85	80	31	19	320
97.86	80	31	19	320
97.87	80	31	19	320
97.88	80	31	19	320
97.89	80	31	19	320
97.90	80	31	19	320
97.91	80	31	19	320
97.92	80	31	19	320
97.93	80	31	19	320
97.94	80	31	19	320
97.95	80	31	19	320
97.96	80	31	19	320
97.97	80	31	19	320
97.98	80	31	19	320
97.99	80	31	19	320
98.00	80	31	19	320
98.01	80	31	19	320
98.02	80	31	19	320
98.03	80	31	19	320
98.04	80	31	19	320
98.05	80	31	19	320
98.06	80	31	19	320
98.07	80	31	19	320
98.08	80	31	19	320
98.09	80	31	19	320
98.10	80	31	19	320
98.11	80	31	19	320
98.12	80	31	19	320
98.13	80	31	19	320
98.14	80	31	19	320
98.15	80	31	19	320
98.16	80	31	19	320
98.17	80	31	19	320
98.18	80	31	19	320
98.19	80	31	19	320
98.20	80	31	19	320
98.21	80	31	19	320
98.22	80	31	19	320
98.23	80	31	19	320
98.24	80	31	19	320
98.25	80	31	19	320
98.26	80	31	19	320
98.27	80	31	19	320
98.28	80	31	19	320
98.29	80	31	19	320
98.30	80	31	19	320
98.31	80	31	19	320
98.32	80	31	19	320
98.33	80	31	19	320
98.34	80	31	19	320
98.35	80	31	19	320
98.36	80	31	19	320
98.37	80	31	19	320
98.38	80	31	19	320
98.39	80	31	19	320
98.40	80	31	19	320
98.41	80	31	19	320
98.42	80	31	19	320
98.43	80	31	19	320
98.44	80	31	19	320
98.45	80	31	19	320
98.46	80	31	19	320
98.47	80	31	19	320
98.48	80	31	19	320
98.49	80	31	19	320
98.50	80	31	19	320
98.51	80	31	19	320
98.52	80	31	19	320
98.53	80	31	19	320
98.54	80	31	19	320
98.55	80	31	19	320
98.56	80	31	19	320
98.57	80	31	19	320
98.58	80	31	19	320
98.59	80	31	19	320
98.60	80	31	19	320
98.61	80	31	19	320
98.62	80	31	19	320
98.63	80	31	19	320
98.64	80	31	19	320
98.65	80	31	19	320
98.66	80	31	19	320
98.67	80	31	19	320
98.68	80	31	19	320
98.69	80	31	19	320
98.70	80	31	19	320
98.71	80	31	19	320
98.72	80	31	19	320
98.73	80	31	19	320
98.74	80	31	19	320
98.75	80	31	19	320
98.76	80	31	19	320
98.77	80	31	19	320
98.78	80	31	19	320
98.79	80	31	19	320
98.80	80	31	19	320
98.81	80	31	19	320
98.82	80	31	19	320
98.83	80	31	19	320
98.84	80	31	19	320
98.85	80	31	19	320
98.86	80	31	19	320
98.87	80	31	19	320
98.88	80	31	19	320
98.89	80	31	19	320
98.90	80	31	19	320
98.91	80	31	19	320
98.92	80	31	19	320
98.93	80	31	19	320
98.94	80	31	19	320
98.95	80	31	19	320
98.96	80	31	19	320
98.97	80	31	19	320
98.98	80	31	19	320
98.99	80	31	19	320
99.00	80	31	19	320

Needs  
W.P.

2-0-C

1099251

