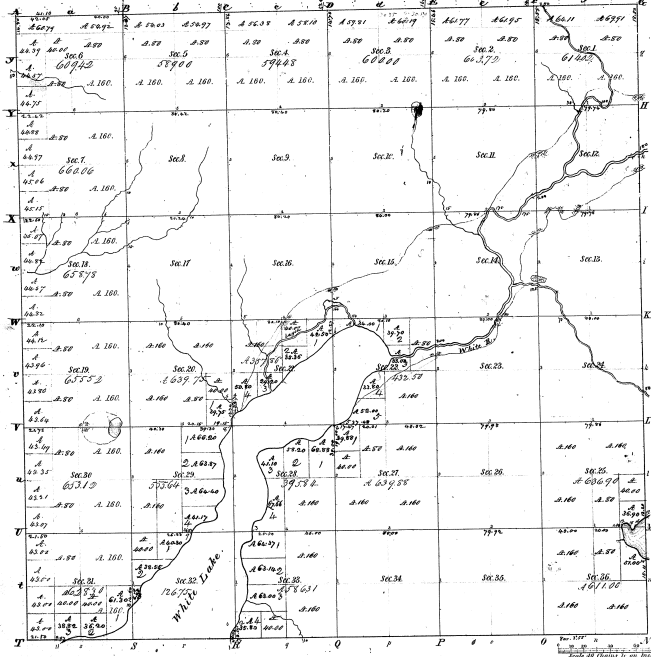


Township N^o 12 N. Range N^o 17 West Mer. (Mich.)

9-19



Masters of Tracts			
Post Course	Acres	Post Course	Acres
1	300.00	1	300.00
2	300.00	2	300.00
3	300.00	3	300.00
4	300.00	4	300.00
5	300.00	5	300.00
6	300.00	6	300.00
7	300.00	7	300.00
8	300.00	8	300.00
9	300.00	9	300.00
10	300.00	10	300.00
11	300.00	11	300.00
12	300.00	12	300.00
13	300.00	13	300.00
14	300.00	14	300.00
15	300.00	15	300.00
16	300.00	16	300.00
17	300.00	17	300.00
18	300.00	18	300.00
19	300.00	19	300.00
20	300.00	20	300.00
21	300.00	21	300.00
22	300.00	22	300.00
23	300.00	23	300.00
24	300.00	24	300.00
25	300.00	25	300.00
26	300.00	26	300.00
27	300.00	27	300.00
28	300.00	28	300.00
29	300.00	29	300.00
30	300.00	30	300.00
31	300.00	31	300.00
32	300.00	32	300.00
33	300.00	33	300.00
34	300.00	34	300.00
35	300.00	35	300.00
36	300.00	36	300.00

9-19

Survey designated	By whom Surveyed	Date of Contract	Amount of Survey	When Surveyed	Amount of Survey
Township 12 N. Range 17 W. Subdivisions	Wm. Whittier & Co.	Feb. 17, 1829	36 04 16	3 29 1829	36 04 16
	Wm. Under	" 28	66 52 25	1 st 1828, 1 st 9-1829	66 52 25

Total number of acres 21665.50

The above map of Township N^o 12 N. Range N^o 17 West Michigan is truly and correctly made, & the field notes of the survey thereon are in the office, which have been examined and approved.
Surveyor General's Office
Ann Arbor, Feb. 27, 1829
C. P. Lawrence Surveyor General