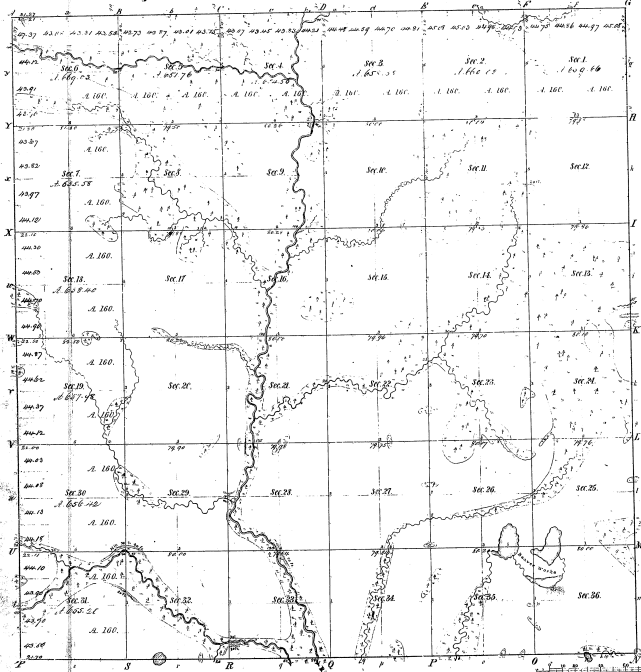


Resurvey  
**Township 1° 22.1' Range 1° 5 H. Mer. Mich**



Mileage of			
Post Office 15 1/2	Post Office 15 1/2	Post Office 15 1/2	Post Office 15 1/2
2-35			

21-35

Total number of Acres 23257 1/2

Survey designated	By Whom Surveyed	Date of Contract	Amount of Survey	When Surveyed	Original map and plat on file for Gov. 11 1/2
Township 1° 22.1'	Henry G. Brown	July 18, 1870	10 25 1/2	1870	11 1/2
Subdivision	J. S. Hall	July 14, 1892	60 21 1/2	1892	12 1/2

The above map of Township 1° 22.1' of Range 1° 5 East of the Principal Meridian Michigan is strictly conformable to the field notes of the survey filed on file in this Office which have been examined and approved.

Survey General's Office  
 Detroit July 21<sup>st</sup> 1896  
 Lucius Lyon, Gen'l Supt.