



PLAT OF LONG POINT

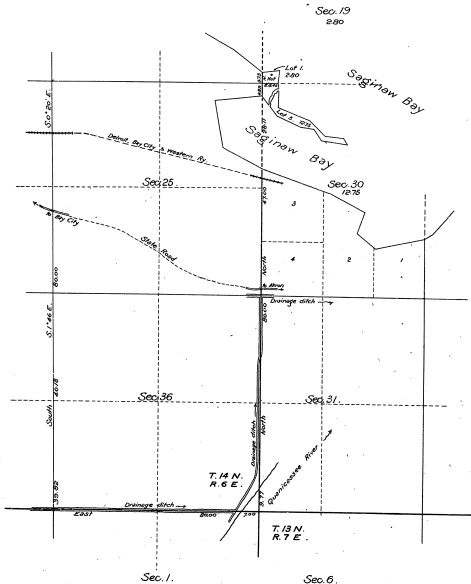
in Saginaw Bay

in Secs. 19 and 30, T. 14 N., R. 7 E., P.M.,

MICHIGAN


Surveyed by F.F. McKinney, U.S. Transitman, June 22-29, 1913,  
under special instructions from the Com'r G.L.O., dated June 7, 1913.

Scale: 20 fms to an inch.



Department of the Interior,  
General Land Office,  
Washington, D.C., January 20, 1914.

The above is a correct plat of survey of Long Point in Saginaw Bay,  
in Secs. 19 and 30, T. 14 N., R. 7 E., Principal Meridian, Michigan, executed  
by F.F. McKinney, U.S. Transitman, in pursuance of special instructions  
from the Commissioner of the General Land Office, bearing date June 7,  
1913, and is strictly conformable to the field notes of survey thereof  
on file in this office, which have been examined and approved.

  
Commissioner and ex officio  
U.S. Surveyor General for Michigan.

24-16

24-16