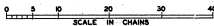
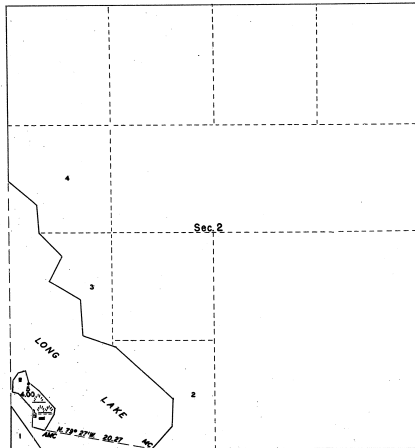


TOWNSHIP 22 NORTH, RANGE 9 WEST, MICHIGAN MERIDIAN, MICHIGAN
SURVEY OF AN ISLAND IN SECTION 2

16-36[®]



Area Surveyed: 4.00 Acres

This plat represents the survey of an island in Long Lake which was not included in the original survey of T. 22 N., R. 9 W., as represented on the plat approved January 15, 1854.

Surveyed by Hugh B. Crawford, Cadastral Surveyor, from July 22 to 24, 1907, under Special Instructions for Group 66, Michigan, dated May 28, 1907.

UNITED STATES DEPARTMENT OF THE INTERIOR
BUREAU OF LAND MANAGEMENT
Washington, D.C. March 28, 1958

This plat is strictly conformable to the approved field notes, and the survey, having been correctly executed in accordance with the requirements of law and the regulations of this Bureau, is hereby accepted.

For the Director
H. B. Crawford
Cadastral Engineering Staff Officer