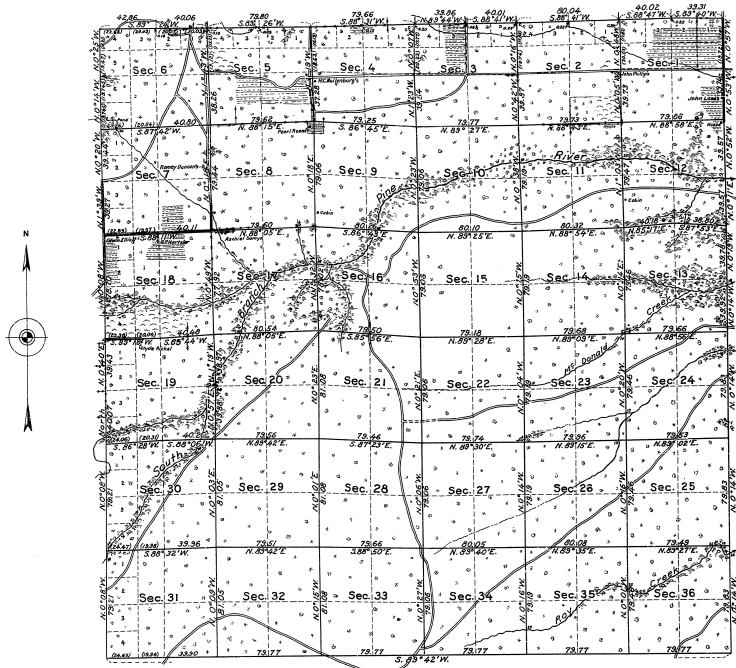


TOWNSHIP No.25 NORTH, RANGE No. 7 EAST, MICHIGAN MERIDIAN, MICHIGAN

DEPENDENT RESURVEY

220
2
18
8



MEMORANDUM.

THIS PLAN OF THE RESURVEY OF TOWNSHIP 25 NORTH, RANGE 7 EAST, DELINEATES A RETRACEMENT AND REESTABLISHMENT OF THE LINES OF THE ORIGINAL SURVEY AS SHOWN UPON THE PLAT APPROVED FEBRUARY 11, 1845, IN THEIR TRUE ORIGINAL POSITION ACCORDING TO THE BEST AVAILABLE EVIDENCE OF THE ORIGINAL CORNERS.

ALL DIFFERENCES BETWEEN THE MEASUREMENTS SHOWN ON THE ORIGINAL PLAT AND THOSE DERIVED IN THE RETRACEMENT HAVE BEEN DISTRIBUTED PROPORTIONALLY BETWEEN ACCEPTED CORNERS IN ACCORDANCE WITH SURVEYING RULES.

REFERENCE WILL BE MADE TO THE ORIGINAL PLAT FOR THE SHOWING OF THE AREAS OF THE VARIOUS SMALLER SUBDIVISIONS.

OFFICE OF U. S. SUPERVISOR OF SURVEYS,
DENVER, COLORADO, DECEMBER 6, 1929.

THE ABOVE PLAT OF TOWNSHIP NO. 25 NORTH, RANGE NO. 7 EAST, OF THE MICHIGAN MERIDIAN, IN THE STATE OF MICHIGAN, IS STRICTLY CONFORMABLE TO THE FIELD NOTES OF THE SURVEY THEREOF, WHICH HAVE BEEN EXAMINED AND APPROVED.

Arthur H. Brown
U. S. SUPERVISOR OF SURVEYS.

DEPARTMENT OF THE INTERIOR,
GENERAL LAND OFFICE,
WASHINGTON, D. C., APRIL 1, 1930.

THE SURVEY REPRESENTED BY THIS PLAT, HAVING BEEN CORRECTLY EXECUTED IN ACCORDANCE WITH THE REQUIREMENTS OF LAW AND THE REGULATIONS OF THIS OFFICE, IS HEREBY ACCEPTED.

W. C. Howell
ASSISTANT COMMISSIONER.

U. S. G. P. 30 30 30
Scale: 40 chains to an inch.

LINES DESIGNATED	BY WHOM SURVEYED	GROUP	RELEASE		WHEN SURVEYED		
			NO.	DATE	BEFORE	COMPLETED	
SOUTH BOUNDARY	GOV. R. YEAL, U.S.G.	16	MAY 15, 1827	4	134	1827	1827
NORTH, EAST & WEST BOUND.	GOV. R. YEAL, U.S.G.	17		17	65.72		
SUBDIVISIONS	GOV. R. YEAL, U.S.G.	17	JUNE 7, 1828	25	574	JULY 15, 1828	SEPT. 15, 1828