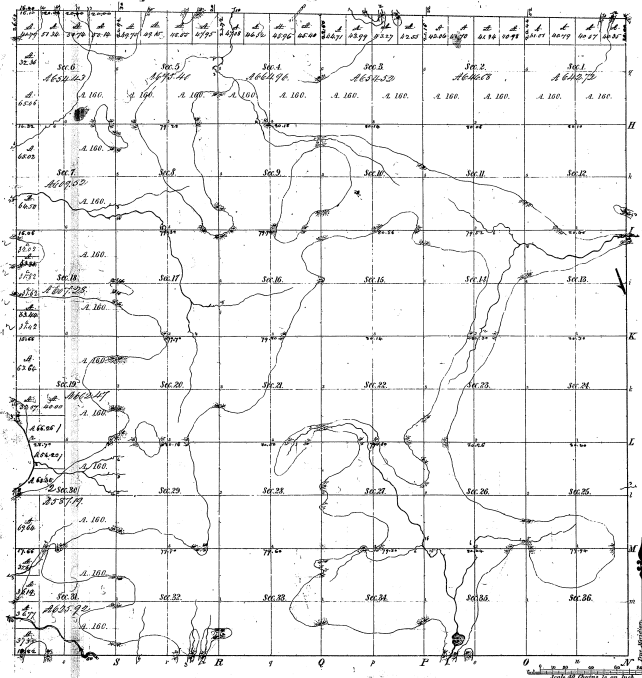


Waterloo 28 8 0

Township N. 28 N. Range N. 8 East Mer.



Measures of part of a Lake on sheet 19 & 20
 Post Course 1811 Post Course 1812 Post Course 1813

1811	1812	1813
1750	1750	1750
1750	1750	1750
1750	1750	1750
1750	1750	1750
1750	1750	1750
1750	1750	1750
1750	1750	1750

22 12

22-12

Total number of Acres 22 12 1/2

Survey designated	By Whom Surveyed	Date of Contract	Amount of Survey	When Surveyed	Where the same was done
Township, Range	John C. Brown	Nov. 19, 1830	36	1830	Waterloo, N.Y.
Subdivisions	John C. Brown	Feb. 23, 1830		1830	

The above copy of Township N. 28 N. of Range N. 8 East of the Principal Meridian, Michigan, is hereby referred to the field notes of this survey along with the plat hereon which have been examined and approved.
 George G. Bennett, Clerk
 Genesee County, N.Y. 1830. *George G. Bennett*