

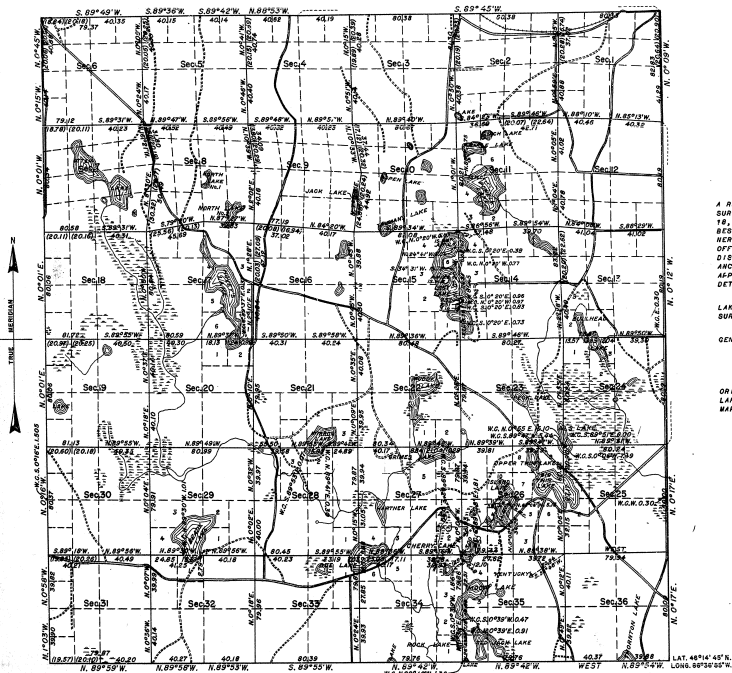
TOWNSHIP NO. 45 NORTH, RANGE NO. 19 WEST, OF THE MICHIGAN MERIDIAN, MICHIGAN.

DEPENDENT RESURVEY.

ISLAND SURVEY, SECTION 26.

37 16

27-16



MEMORANDUM.

THIS PLAT OF THE RESURVEY OF T. 45 N., R. 19 W. DELINEATES A RETRACEMENT AND REESTABLISHMENT OF THE LINES OF THE ORIGINAL SURVEY AND RESURVEY AS SHOWN UPON THE PLAT APPROVED NOVEMBER 18, 1856, IN THEIR TRUE ORIGINAL POSITIONS ACCORDING TO THE BEST AVAILABLE EVIDENCE OF THE POSITION OF THE ORIGINAL CORNERS. ALL DIFFERENCES BETWEEN THE MEASUREMENTS SHOWN ON THE OFFICIAL PLAT AND THOSE DERIVED IN THE RETRACEMENT HAVE BEEN DISTRIBUTED PROPORTIONALLY BETWEEN ACCEPTED CORNERS IN ACCORDANCE WITH SURVEYING RULES, REFERENCE WILL BE MADE TO THE PLAT APPROVED NOVEMBER 18, 1856, FOR THE SHOWING OF AREAS AND MORE DETAILED DESCRIPTIONS OF THE VARIOUS SMALLER SUBDIVISIONS.

THE PLAT ALSO REPRESENTS THE SURVEY OF AN ISLAND IN ISLAND LAKE, SECTION 26, WHICH WAS NOT INCLUDED IN THE ORIGINAL OFFICIAL SURVEYS OF THE TOWNSHIP.

THE RESURVEY WAS EXECUTED PURSUANT TO AUTHORITY CONTAINED IN GENERAL LAND OFFICE LETTER 1479473 "C", DATED MARCH 23, 1932.

THE TOWNSHIP EMBRACES MOSTLY CUT-OVER LAND, FROM WHICH THE ORIGINAL TIMBER HAS BEEN REMOVED. THE PRESENT GROWTH CONSISTS LARGELY OF SECOND-GROWTH WHITE AND RED PINE, JACK PINE, AND MAPLE ON THE UPLAND, WITH CEDAR AND TAMARACK IN THE SWAMPS.

0 20 40 80
SCALE IN CHAINS.

AREA RESURVEYED, 62,403.33 ACRES.
AREA SURVEYED, 621 ACRES.

UNITED STATES DEPARTMENT OF THE INTERIOR
GENERAL LAND OFFICE

LINES DESIGNATED	BY WHOM SURVEYED	GROUP NO.	DATE OF		WHEN SURVEYED	
			SPECIAL INSTRUCTIONS	BEGUN	COMPLETED	
EXTERIOR	OSCAR B. WALSH	44	JULY 15, 1931.	JUNE 04, 1932.	AUGUST 22, 1932.	
SUBDIVISIONAL READER CONNECTION	MORVILLE E. SHEARER					

DENVER, COLORADO, MARCH 23, 1945.
THIS PLAT OF TOWNSHIP NO. 45 NORTH, RANGE NO. 19 WEST OF THE MICHIGAN MERIDIAN, MICHIGAN, IS STRICTLY CONFORMABLE TO THE FIELD NOTES OF THE SURVEY THEREOF, WHICH HAVE BEEN EXAMINED AND APPROVED.

WASHINGTON, D. C., JULY 21, 1945.
THE SURVEY REPRESENTED BY THIS PLAT, HAVING BEEN CORRECTLY EXECUTED IN ACCORDANCE WITH THE REQUIREMENTS OF LAW AND THE REGULATIONS OF THIS OFFICE, IS HEREBY ACCEPTED.

Joseph Howard Wolfson
SUPERVISOR OF SURVEYS.

Joseph Howard Wolfson
ASSISTANT COMMISSIONER.