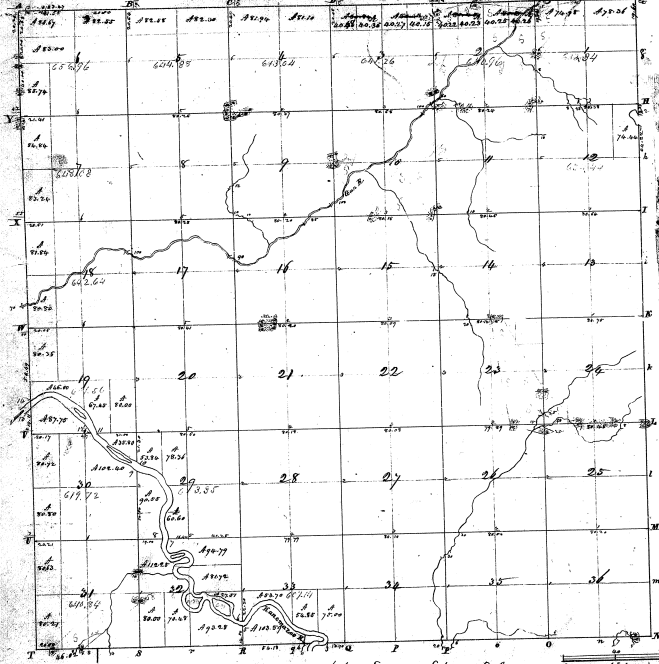


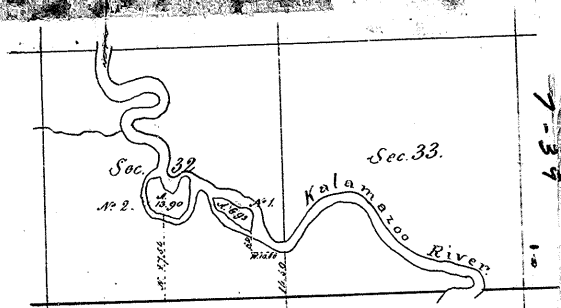
Township N. 1. North, Range N. 2. West 4th (Misc. Plan.)



Surveyed in December 1826 by Sylvester Sibley, S. L.

Acres		Acres	
Section	Area	Section	Area
SL 1	36.00	SL 19	36.00
SL 2	36.00	SL 20	36.00
SL 3	36.00	SL 21	36.00
SL 4	36.00	SL 22	36.00
SL 5	36.00	SL 23	36.00
SL 6	36.00	SL 24	36.00
SL 7	36.00	SL 25	36.00
SL 8	36.00	SL 26	36.00
SL 9	36.00	SL 27	36.00
SL 10	36.00	SL 28	36.00
SL 11	36.00	SL 29	36.00
SL 12	36.00	SL 30	36.00
SL 13	36.00	SL 31	36.00
SL 14	36.00	SL 32	36.00
SL 15	36.00	SL 33	36.00
SL 16	36.00	SL 34	36.00
SL 17	36.00	SL 35	36.00
SL 18	36.00	SL 36	36.00
Sum	1296.00	Sum	1296.00

7-34



7-34

Surveyed in 1850 by Thomas Whelpley, Deputy Surveyor

The above diagram of islands in the Kalamazoo River in
 T. S. R. 11 M. is strictly conformable to the field notes of the same
 on file in this Office
 Survey General's Office,
 Detroit August 29 1850.

Charles M. H. H.
 Survey General