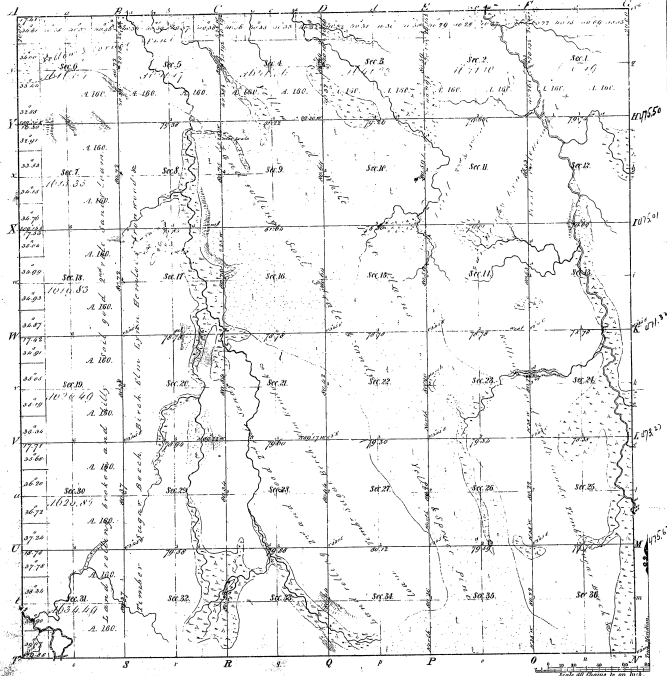


Township. 1° 30' N. Range. 1° 2' W. Mer. 117th.



Meridian 117°
 Public Course 1824' Public Course 1824' Public Course 1824'

18-5

Total number of Acres 22037.60

Survey Designated	By Whom Surveyed	Date of Conduct	Amount of Survey	When Surveyed	Place of the Survey
Public Lands	James H. H. H.	1824	10,000	1824	1824
Subdivisions	James H. H.	April 10, 1852	57,657.60	1852	1852

The above Map of Township 1° 30' N. Range 1° 2' W. Mer. 117th. Original Meridian 117th. as shown on the map, and the field notes of the survey thereon, in file in this office, read like this: "corrected and approved" Surveyor General's Office.
 Detroit Dec. 23 1858
 Charles A. Miller, Surveyor