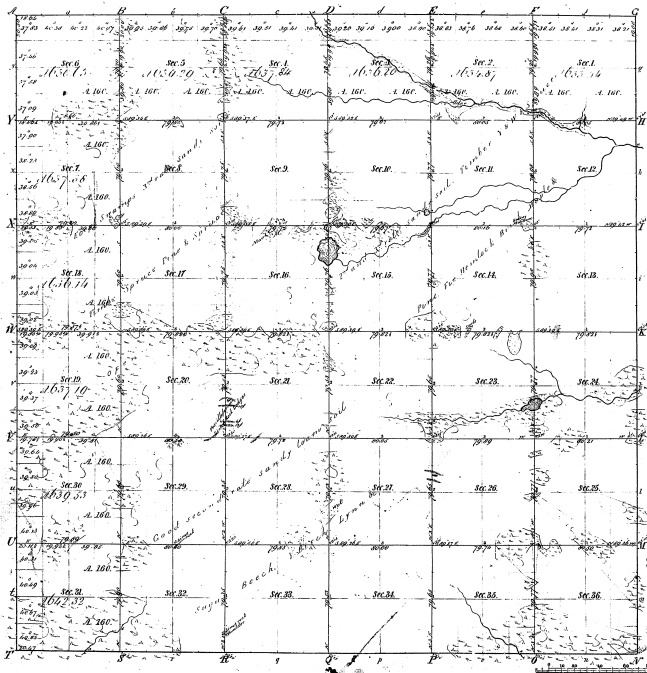


Township 1° 44. N Range 1° 5 E Mer. Mich.



Boundaries of  
 Public Courses 1842 Public Courses 1842 Public Courses 1842

3413

34-52

Total number of Acres 2300103

Survey Designated	By Whom Surveyed	Date of Commence	Journal of Survey	When Surveyed	Area of Survey in Acres
Township 144 N	W. A. Reed	Jan. 25 1840	W. A. Reed	1840	3120000
Subdivisions	Maxwell Miller	June 29 1842	W. A. Reed	1842	276248

The above copy of Township 1° 44. North of Range 1° 5 East of the Principal Meridian Michigan is a copy of the original notes of the survey thereof on file in this office, which have been examined and approved.

Surveyor General's Office,  
 Detroit, June 6, 1851

Charles H. H. H.  
 Sur. Gen.

