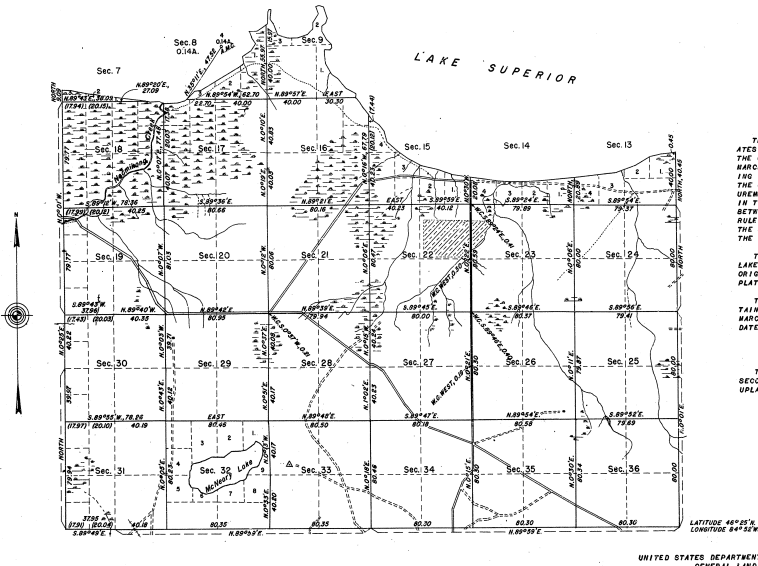




TOWNSHIP NO. 47 NORTH, RANGE NO. 5 WEST, OF THE MICHIGAN MERIDIAN, MICHIGAN.  
DEPENDENT RESURVEY.

34-9  
②  
34-9



MEMORANDUM

THIS PLAT OF THE RESURVEY OF T. 47 N., R. 5 W., DELINEATES A RETRACEMENT AND REESTABLISHMENT OF THE LINES OF THE ORIGINAL SURVEY, AS SHOWN UPON THE PLAT APPROVED MARCH 14, 1890, IN THEIR TRUE ORIGINAL POSITIONS ACCORDING TO THE BEST AVAILABLE EVIDENCE OF THE POSITION OF THE ORIGINAL CORNERS. ALL DIFFERENCES BETWEEN THE MEASUREMENTS SHOWN ON THE ORIGINAL PLAT AND THOSE REVEALED IN THE RETRACEMENTS HAVE BEEN DISTRIBUTED PROPORTIONALLY BETWEEN ACCEPTED CORNERS IN ACCORDANCE WITH SURVEYING RULES. REFERENCE WILL BE MADE TO THE ORIGINAL PLAT FOR THE SHOWING OF AREAS AND MORE DETAILED DESCRIPTIONS OF THE VARIOUS SMALLER SUBDIVISIONS.

THIS PLAT ALSO REPRESENTS THE SURVEY OF AN ISLAND IN LAKE SUPERIOR, IN SEC. 8, WHICH WAS NOT INCLUDED IN THE ORIGINAL SURVEY, NOR SHOWN UPON THE OFFICIAL TOWNSHIP PLAT.

THE RESURVEY WAS EXECUTED PURSUANT TO AUTHORITY CONTAINED IN GENERAL LAND OFFICE LETTER 1408604 "C" DATED MARCH 4, 1931, WHICH BEARS DEPARTMENTAL APPROVAL UNDER DATE OF MARCH 5, 1931.

THE TOWNSHIP SUPPORTS A HEAVY STAND OF VIRGIN AND SECOND GROWTH MAPLE, BEECH, AND BIRCH TREES ON THE UPLAND AREAS, WITH DENSE CEDAR AND SPRUCE IN THE SWAMPS.

UNITED STATES DEPARTMENT OF THE INTERIOR  
GENERAL LAND OFFICE

DENVER, COLORADO, MAY 29, 1942.  
THIS PLAT OF TOWNSHIP NO. 47 NORTH, RANGE NO. 5 WEST, OF THE MICHIGAN MERIDIAN, MICHIGAN, IS STRICTLY CONFORMABLE TO THE FIELD NOTES OF THE RESURVEY THEREOF, WHICH HAVE BEEN EXAMINED AND APPROVED.

*James M. Minner*  
SUPERVISOR OF SURVEYS.

WASHINGTON, D.C., DECEMBER 10, 1942.  
THE RESURVEY REPRESENTED BY THIS PLAT, HAVING BEEN CORRECTLY EXECUTED IN ACCORDANCE WITH THE REQUIREMENTS OF LAW AND THE REGULATIONS OF THIS OFFICE, IS HEREBY APPROVED.

*Geoff David McNeil*  
ASSISTANT COMMISSIONER.

100 0 10 20 40 60 80 Feet Scale: 1 inch equals 40 chains.		Area Resurveyed 14,371.08 Acres Area Surveyed 614 Acres			
LINES DESIGNATED	BY WHOM SURVEYED	GROUP NO.	DATE OF SPECIAL INSTRUCTIONS	WHEN SURVEYED BEGUN	COMPLETED
External Subdivisional Meanders Connections	Oscar S. Walsh and Tom V. Wilder	37	July 9, 1935	Aug 26 1936	July 15, 1937