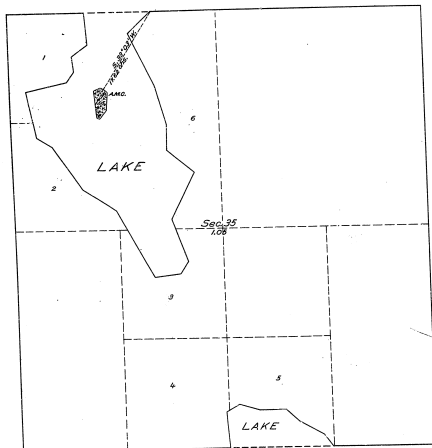


PLAT OF AN ISLAND
 IN
 Meandered Lake,
 Sec. 35, T. 20 N. R. 4 W. Mich. Mer.
 MICHIGAN.



LEGEND.

Scale: 1 inch = 10 chains.

Surveyed by Earl G. Harrington, U. S. Cadastral Engineer, on October 27, 1922, under special instructions for Group No. 4, Michigan, dated May 24, 1922, issued by Arthur D. Kilder, Associate Supervisor of Surveys, which were approved by the Commissioner of the General Land Office on June 14, 1922.
 Area of land surveyed = 1.05 Acres.

The undersigned hereby certifies that the survey delineated upon this plat has been examined under his general direction and in accordance with the approved special instructions dated May 24, 1922, issued pursuant to authority contained in office letter 966525 "M" J.M., dated April 7, 1922, addressed to the Secretary of the Interior (approved April 10, 1922), and letter dated April 19, 1922, and that the field notes and the plat of the survey have been carefully verified.

Durser, Colorado,
 November 7, 1923.

Arthur D. Kilder
 Supervisor of Surveys.

Department of the Interior, *7849*
 General Land Office.

Washington, D. C., January 22, 1924.

The above plat of an Island in a meandered Lake in Section 35, Township 20 North, Range 4 West, of the Michigan Meridian, in the State of Michigan, is strictly conformable to the field notes of the survey thereof, on file in this office, which have been examined and approved.

William J. Gray
 Commissioner and ex officio
 U. S. Surveyor General for Michigan.

13-4

13-4