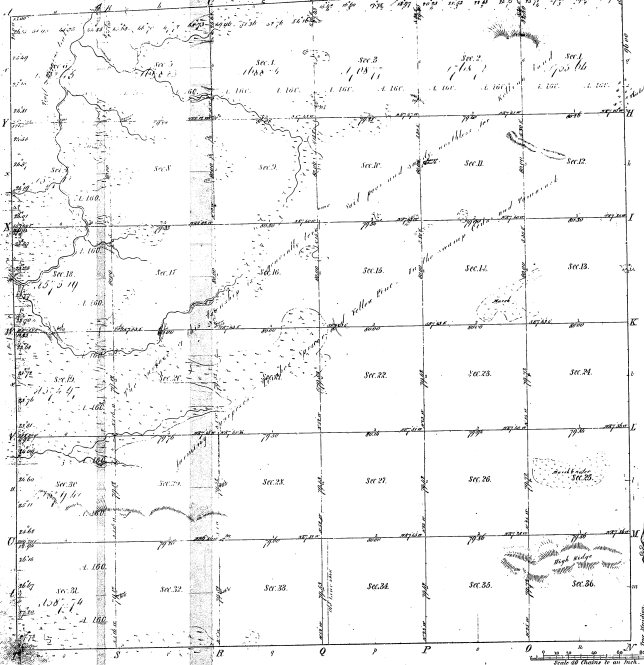


*Re Survey*  
**Township 13° 25' N. Range 12° 41' W. Mer. Mich.**



14-21 @

Meadow's of					
10000'	10000'	10000'	10000'	10000'	10000'

Total number of Acres 230,379

Survey Designated	When Surveyed	Date of Condit	Amount of Survey	Plan Surveyed	Find on and when the Sur' was
Township Area	1836	1837	20,000	836	
Subdivisions	1837	1838	209,379	837	

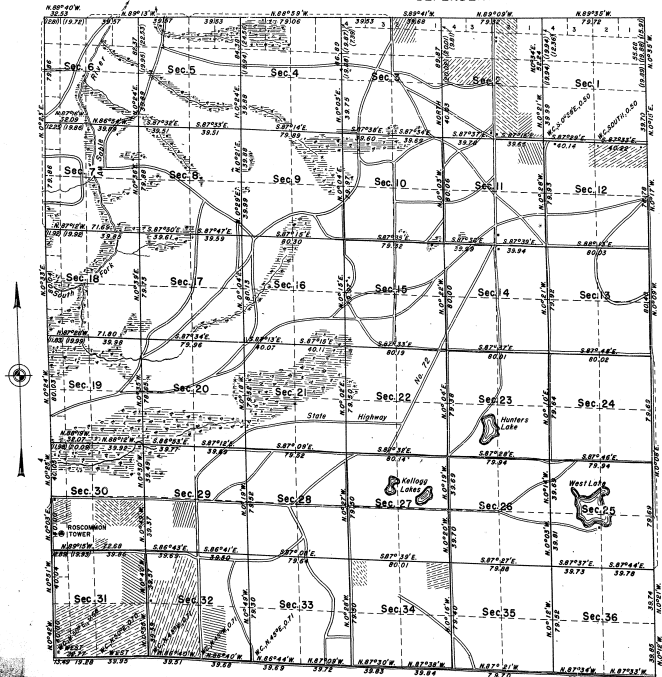
The above map of Township 13° 25' North of Range 12° 41' West of the Principal Meridian Michigan is a *re-survey* of the field notes of the survey thereof for the purpose which has been mentioned and approved by the State Geologist's Office.

Charles J. Stone    State Geologist



# TOWNSHIP No. 25 NORTH, RANGE No. 1 WEST, MICHIGAN MERIDIAN, MICHIGAN.

## DEPENDENT RESURVEY



### MEMORANDUM.

THIS PLAT OF THE RESURVEY OF T. 25 N., R. 1 W., DELINEATES A RETRACEMENT AND REESTABLISHMENT OF THE LINES OF THE ORIGINAL SURVEY AS SHOWN UPON THE PLAT APPROVED FEBRUARY 9, 1893, IN THEIR TRUE ORIGINAL POSITIONS ACCORDING TO THE BEST AVAILABLE EVIDENCE OF THE POSITION OF THE ORIGINAL CORNERS. ALL DIFFERENCES BETWEEN THE MEASUREMENTS SHOWN ON THE ORIGINAL PLAT AND THOSE OBTAINED IN THE RETRACEMENT HAVE BEEN DISTRIBUTED PROPORTIONALLY BETWEEN ACCEPTED CORNERS IN ACCORDANCE WITH SURVEYING RULES. REFERENCE WILL BE MADE TO THE ORIGINAL PLAT FOR THE SHOWING OF AREAS AND MORE DETAILED DESCRIPTIONS OF THE VARIOUS SMALLER SUBDIVISIONS.

THE RESURVEY WAS EXECUTED PURSUANT TO AUTHORITY CONTAINED IN GENERAL LAND OFFICE LETTERS 1570445 "C", DATED MARCH 23, 1937, AND MAY 16, 1937 WHICH BEARS DEPARTMENTAL APPROVAL ON THE SAME DATE.

### NOTE.

THE SURFACE OF THE TOWNSHIP IS GENERALLY GENTLY ROLLING. THE GREATER PART OF THE TOWNSHIP HAS A SCATTERING TO FAIR GROWTH OF OAK, JACK PINE, AND PUGLAR TIMBER ON THE UPLAND, WITH SPRUCE, CEDAR, AND TAMBARK IN THE SWAMP. THE TIMBER IS OF LITTLE COMMERCIAL VALUE.

OFFICE OF SUPERVISOR OF SURVEYS  
DENVER, COLORADO, AUGUST 26, 1940

THE ABOVE PLAT OF TOWNSHIP NO. 25 NORTH, RANGE NO. 1 WEST, OF THE MICHIGAN MERIDIAN, MICHIGAN, IS STRICTLY CONFORMABLE TO THE FIELD NOTES OF THE RESURVEY THEREOF, WHICH HAVE BEEN EXAMINED AND APPROVED.

*James P. Duncan*

SUPERVISOR OF SURVEYS.

UNITED STATES  
DEPARTMENT OF THE INTERIOR  
GENERAL LAND OFFICE  
WASHINGTON, D.C., APRIL 7, 1941.

THE RESURVEY REPRESENTED BY THIS PLAT, HAVING BEEN CORRECTLY EXECUTED IN ACCORDANCE WITH THE REQUIREMENTS OF LAW AND THE REGULATIONS OF THIS OFFICE, IS HEREBY APPROVED.

*William W. Lusk*  
ASSISTANT COMMISSIONER.

Scale: 40 Chains to an inch.  
Area Resurveyed 23,073.79 Acres.

LINES DESIGNATED BY WHOM SURVEYED	GROUP	DATE	MILEAGE WHEN SURVEYED			WHEN COMPLETED
			MLG.	CHS.	SEGN.	
Exterior	Gay R. West	40 April 12, 1937	17	5850	June 1, 1937	August 6, 1937
Subdivisional	T. Nolan Coombs James T. Boyd	59	6044			