

PLAT of two Islands

in Fife Lake, in Secs 13 and 14, Tp. 25 N., R. 9 W., Michigan Mer.

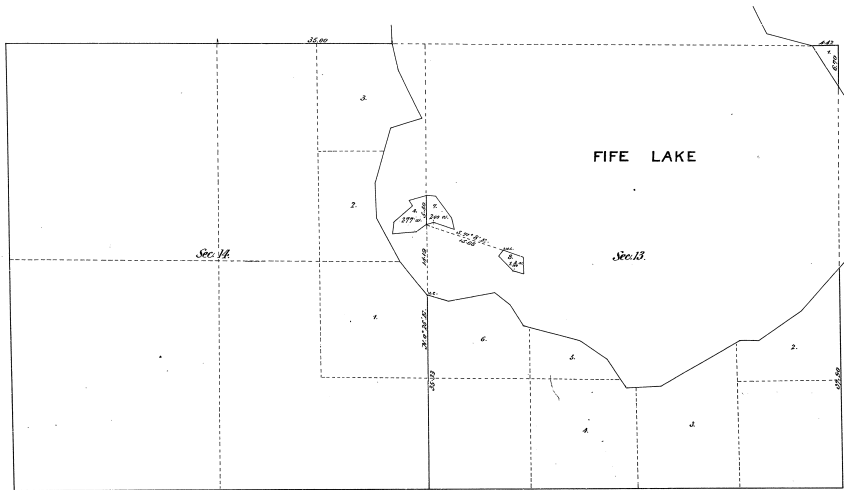
MICHIGAN.

Surveyed by Delmar E. Reed, U.S. Dep. Surveyor, April 15-16, 1903,
under special instructions from the Com' G.L.O. dated Dec. 17, 1902.

Scale 10 chs = 1 inch.

16-21

(2) 16-21



Department of the Interior,
General Land Office,
Washington, D.C. Oct. 17th 1903.

The above plat of two Islands, in Fife Lake, in Secs 13 and 14, Tp. 25 N., R. 9 W., Michigan Meridian, Michigan, is a correct plat of a survey executed by Delmar E. Reed, U.S. Deputy Surveyor, in pursuance of special instructions from the Commissioner of the General Land Office, bearing date Dec. 17, 1902, and is strictly conformable to the field notes thereof on file in this office, which have been examined and approved.

W. A. Richards
Commissioner ex officio
Surveyor General for Michigan