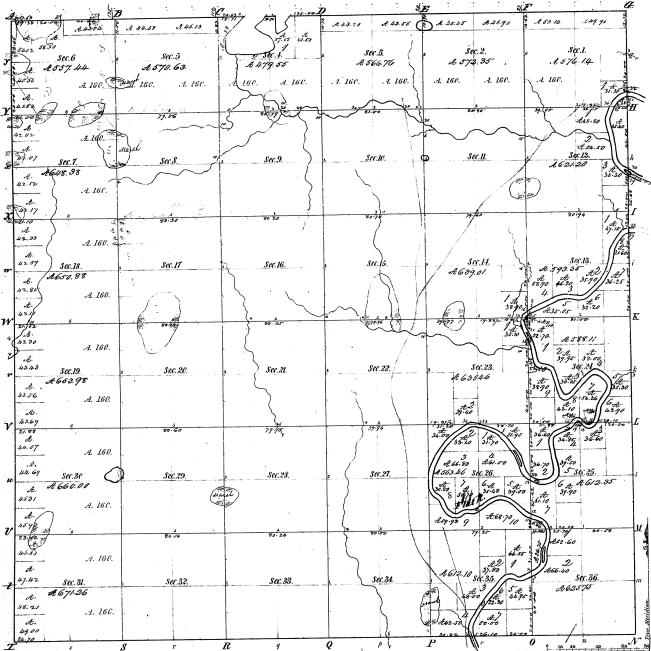


Township 1° 4' N. Range 1° 0' West Mer. (Mich.)



Total number of Acres 23386.66

Survey Designated	By Whom Surveyed	Date of Contract	Amount of Survey	When Surveyed	Where the same was done
Township lines	John Campbell	Oct. 21, 1836	36.00	15 <sup>th</sup> Sep. 1836	Sec. 1, 10, 19
Subdivisions	John Campbell	March, 1837	66.22	8 <sup>th</sup> Sep. 1837	Sec. 1, 10, 19
Sec. 18/20 boundary	George Cooper		6.44		

The above copy of Township 1° 4' North of Range 1° 0' West of the Principal Meridian Michigan is a duly certified to the field notes of the survey thereon on file in this office which have been examined and approved.

Surveyor General's Office  
Ann Arbor, Feb. 21, 1839

Manders of Head River to of a Lake.											
Prob Course	Dist	Prob Course	Dist	Prob Course	Dist	Prob Course	Dist	Prob Course	Dist	Prob Course	Dist
1	178.0	8.0	330.0	15.0	178.0	8.0	330.0	15.0	178.0	8.0	330.0
2	178.0	8.0	330.0	15.0	178.0	8.0	330.0	15.0	178.0	8.0	
3	178.0	8.0	330.0	15.0	178.0	8.0	330.0	15.0	178.0	8.0	
4	178.0	8.0	330.0	15.0	178.0	8.0	330.0	15.0	178.0	8.0	
5	178.0	8.0	330.0	15.0	178.0	8.0	330.0	15.0	178.0	8.0	
6	178.0	8.0	330.0	15.0	178.0	8.0	330.0	15.0	178.0	8.0	
7	178.0	8.0	330.0	15.0	178.0	8.0	330.0	15.0	178.0	8.0	
8	178.0	8.0	330.0	15.0	178.0	8.0	330.0	15.0	178.0	8.0	
9	178.0	8.0	330.0	15.0	178.0	8.0	330.0	15.0	178.0	8.0	
10	178.0	8.0	330.0	15.0	178.0	8.0	330.0	15.0	178.0	8.0	
11	178.0	8.0	330.0	15.0	178.0	8.0	330.0	15.0	178.0	8.0	
12	178.0	8.0	330.0	15.0	178.0	8.0	330.0	15.0	178.0	8.0	
13	178.0	8.0	330.0	15.0	178.0	8.0	330.0	15.0	178.0	8.0	
14	178.0	8.0	330.0	15.0	178.0	8.0	330.0	15.0	178.0	8.0	
15	178.0	8.0	330.0	15.0	178.0	8.0	330.0	15.0	178.0	8.0	
16	178.0	8.0	330.0	15.0	178.0	8.0	330.0	15.0	178.0	8.0	
17	178.0	8.0	330.0	15.0	178.0	8.0	330.0	15.0	178.0	8.0	
18	178.0	8.0	330.0	15.0	178.0	8.0	330.0	15.0	178.0	8.0	
19	178.0	8.0	330.0	15.0	178.0	8.0	330.0	15.0	178.0	8.0	
20	178.0	8.0	330.0	15.0	178.0	8.0	330.0	15.0	178.0	8.0	
21	178.0	8.0	330.0	15.0	178.0	8.0	330.0	15.0	178.0	8.0	
22	178.0	8.0	330.0	15.0	178.0	8.0	330.0	15.0	178.0	8.0	
23	178.0	8.0	330.0	15.0	178.0	8.0	330.0	15.0	178.0	8.0	
24	178.0	8.0	330.0	15.0	178.0	8.0	330.0	15.0	178.0	8.0	
25	178.0	8.0	330.0	15.0	178.0	8.0	330.0	15.0	178.0	8.0	
26	178.0	8.0	330.0	15.0	178.0	8.0	330.0	15.0	178.0	8.0	
27	178.0	8.0	330.0	15.0	178.0	8.0	330.0	15.0	178.0	8.0	
28	178.0	8.0	330.0	15.0	178.0	8.0	330.0	15.0	178.0	8.0	
29	178.0	8.0	330.0	15.0	178.0	8.0	330.0	15.0	178.0	8.0	
30	178.0	8.0	330.0	15.0	178.0	8.0	330.0	15.0	178.0	8.0	
31	178.0	8.0	330.0	15.0	178.0	8.0	330.0	15.0	178.0	8.0	
32	178.0	8.0	330.0	15.0	178.0	8.0	330.0	15.0	178.0	8.0	
33	178.0	8.0	330.0	15.0	178.0	8.0	330.0	15.0	178.0	8.0	
34	178.0	8.0	330.0	15.0	178.0	8.0	330.0	15.0	178.0	8.0	
35	178.0	8.0	330.0	15.0	178.0	8.0	330.0	15.0	178.0	8.0	
36	178.0	8.0	330.0	15.0	178.0	8.0	330.0	15.0	178.0	8.0	

7-13

