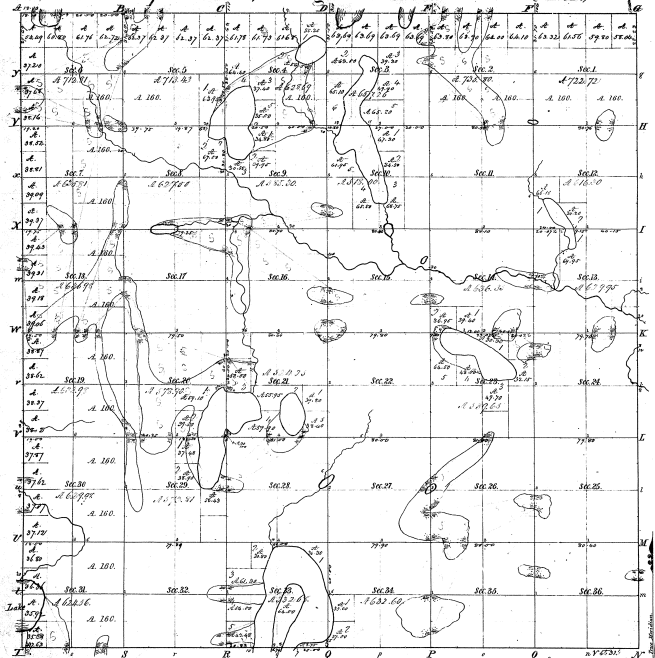


Township N. 8 N., Range N. 9 West Mer. (Mich.)



7-12

Municipality of Lakeside, name of Applicant			
Block	Corner	Area	Value
1	SW	1.00	1.00
2	SW	1.00	1.00
3	SW	1.00	1.00
4	SW	1.00	1.00
5	SW	1.00	1.00
6	SW	1.00	1.00
7	SW	1.00	1.00
8	SW	1.00	1.00
9	SW	1.00	1.00
10	SW	1.00	1.00
11	SW	1.00	1.00
12	SW	1.00	1.00
13	SW	1.00	1.00
14	SW	1.00	1.00
15	SW	1.00	1.00
16	SW	1.00	1.00
17	SW	1.00	1.00
18	SW	1.00	1.00
19	SW	1.00	1.00
20	SW	1.00	1.00
21	SW	1.00	1.00
22	SW	1.00	1.00
23	SW	1.00	1.00
24	SW	1.00	1.00
25	SW	1.00	1.00
26	SW	1.00	1.00
27	SW	1.00	1.00
28	SW	1.00	1.00
29	SW	1.00	1.00
30	SW	1.00	1.00
31	SW	1.00	1.00
32	SW	1.00	1.00
33	SW	1.00	1.00
34	SW	1.00	1.00
35	SW	1.00	1.00
36	SW	1.00	1.00
37	SW	1.00	1.00
38	SW	1.00	1.00
39	SW	1.00	1.00
40	SW	1.00	1.00
41	SW	1.00	1.00
42	SW	1.00	1.00
43	SW	1.00	1.00
44	SW	1.00	1.00
45	SW	1.00	1.00
46	SW	1.00	1.00
47	SW	1.00	1.00
48	SW	1.00	1.00
49	SW	1.00	1.00
50	SW	1.00	1.00
51	SW	1.00	1.00
52	SW	1.00	1.00
53	SW	1.00	1.00
54	SW	1.00	1.00
55	SW	1.00	1.00
56	SW	1.00	1.00
57	SW	1.00	1.00
58	SW	1.00	1.00
59	SW	1.00	1.00
60	SW	1.00	1.00
61	SW	1.00	1.00
62	SW	1.00	1.00
63	SW	1.00	1.00
64	SW	1.00	1.00
65	SW	1.00	1.00
66	SW	1.00	1.00
67	SW	1.00	1.00
68	SW	1.00	1.00
69	SW	1.00	1.00
70	SW	1.00	1.00
71	SW	1.00	1.00
72	SW	1.00	1.00
73	SW	1.00	1.00
74	SW	1.00	1.00
75	SW	1.00	1.00
76	SW	1.00	1.00
77	SW	1.00	1.00
78	SW	1.00	1.00
79	SW	1.00	1.00
80	SW	1.00	1.00
81	SW	1.00	1.00
82	SW	1.00	1.00
83	SW	1.00	1.00
84	SW	1.00	1.00
85	SW	1.00	1.00
86	SW	1.00	1.00
87	SW	1.00	1.00
88	SW	1.00	1.00
89	SW	1.00	1.00
90	SW	1.00	1.00
91	SW	1.00	1.00
92	SW	1.00	1.00
93	SW	1.00	1.00
94	SW	1.00	1.00
95	SW	1.00	1.00
96	SW	1.00	1.00
97	SW	1.00	1.00
98	SW	1.00	1.00
99	SW	1.00	1.00
100	SW	1.00	1.00

Total number of Acres: 2,244.51

Survey designated	By Whom Surveyed	Date of Contract	Amount of Survey	When Surveyed
Township lines	J. D. Campbell	Oct. 2, 1826	26.75.57	2 <sup>d</sup> 7 <sup>th</sup> 1827
Subdivisions	H. W. Aldrich	Nov. 1, 1827	74.68.83	1 <sup>st</sup> 7 <sup>th</sup> 1827

The above Map of Township N. 8 North of Range N. 9 West of the Principal Meridian of the State of Michigan is a true and correct copy of the original map as the same has been examined and approved.

Surveyor General of the Government, Dec. 24th 1829

*[Signature]*

7-12