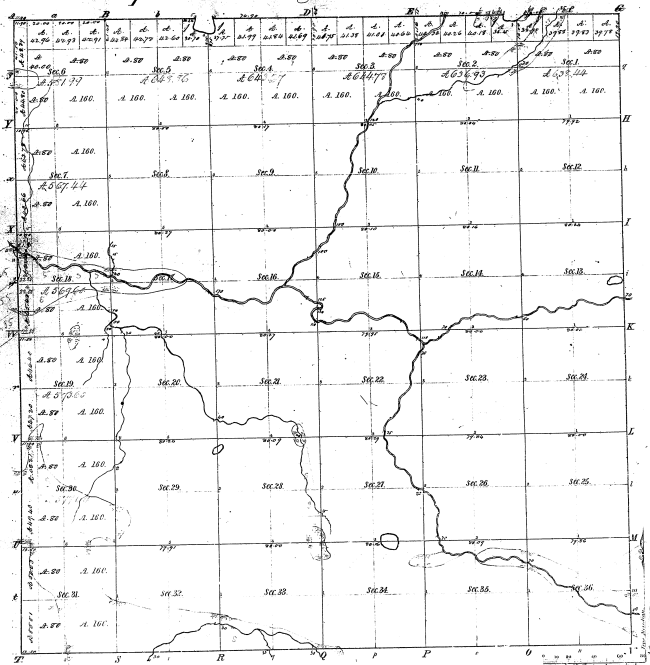


Township N<sup>o</sup> 17 N., Range N<sup>o</sup> 13 West Mer. (Mich.)



Measure of Acres			
Procl. Courses	ACRES	Procl. Courses	ACRES
1231	160.00	1232	160.00
1233	160.00	1234	160.00
1235	160.00	1236	160.00
1237	160.00	1238	160.00
1239	160.00	1240	160.00
1241	160.00	1242	160.00
1243	160.00	1244	160.00
1245	160.00	1246	160.00
1247	160.00	1248	160.00
1249	160.00	1250	160.00
1251	160.00	1252	160.00
1253	160.00	1254	160.00
1255	160.00	1256	160.00
1257	160.00	1258	160.00
1259	160.00	1260	160.00
1261	160.00	1262	160.00
1263	160.00	1264	160.00
1265	160.00	1266	160.00
1267	160.00	1268	160.00
1269	160.00	1270	160.00
1271	160.00	1272	160.00
1273	160.00	1274	160.00
1275	160.00	1276	160.00
1277	160.00	1278	160.00
1279	160.00	1280	160.00
1281	160.00	1282	160.00
1283	160.00	1284	160.00
1285	160.00	1286	160.00
1287	160.00	1288	160.00
1289	160.00	1290	160.00
1291	160.00	1292	160.00
1293	160.00	1294	160.00
1295	160.00	1296	160.00
1297	160.00	1298	160.00
1299	160.00	1300	160.00

10-13

Total number of Acres			
Survey designated	By whom surveyed	Date of Contract	Amount of Acres
Township lines	Wm. S. H. H. & Co.	1837	25, 50, 100
Subdivisions	Wm. S. H. H. & Co.	1838	66, 132, 264

The above copy of Township N<sup>o</sup> 17 North, of Range N<sup>o</sup> 13 West of the Principal Meridian, Michigan, is hereby represented to the full value of the survey thereon on July 10, 1857, for which have been examined and approved.

Surveyor General's Office  
 Given at St. Louis, the 28<sup>th</sup> of 1857

W. S. H. H. & Co.