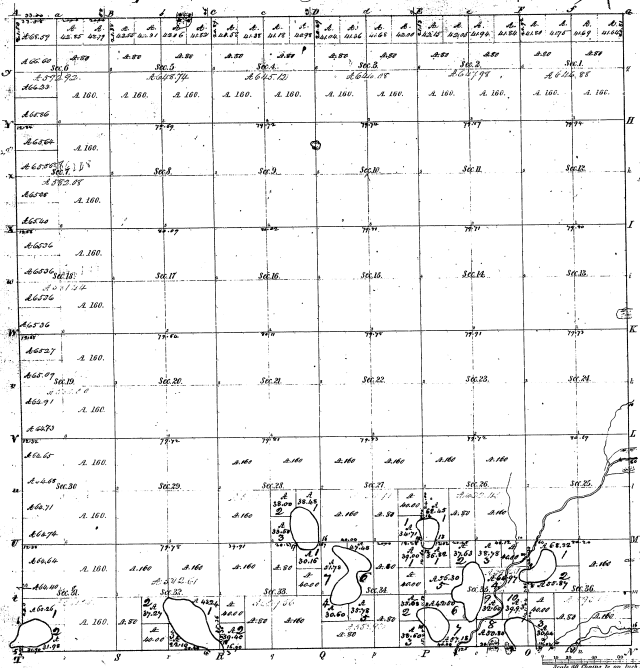


Township No 18 N. Range No 13 West Mer. (Mich.)

10-12



Mileage of Section		Mileage of Course		Mileage of Section		Mileage of Course	
From	To	From	To	From	To	From	To
1	2	1	2	1	2	1	2
2	3	2	3	2	3	2	3
3	4	3	4	3	4	3	4
4	5	4	5	4	5	4	5
5	6	5	6	5	6	5	6
6	7	6	7	6	7	6	7
7	8	7	8	7	8	7	8
8	9	8	9	8	9	8	9
9	10	9	10	9	10	9	10
10	11	10	11	10	11	10	11
11	12	11	12	11	12	11	12
12	13	12	13	12	13	12	13
13	14	13	14	13	14	13	14
14	15	14	15	14	15	14	15
15	16	15	16	15	16	15	16
16	17	16	17	16	17	16	17
17	18	17	18	17	18	17	18
18	19	18	19	18	19	18	19
19	20	19	20	19	20	19	20
20	21	20	21	20	21	20	21
21	22	21	22	21	22	21	22
22	23	22	23	22	23	22	23
23	24	23	24	23	24	23	24
24	25	24	25	24	25	24	25
25	26	25	26	25	26	25	26
26	27	26	27	26	27	26	27
27	28	27	28	27	28	27	28
28	29	28	29	28	29	28	29
29	30	29	30	29	30	29	30
30	31	30	31	30	31	30	31
31	32	31	32	31	32	31	32
32	33	32	33	32	33	32	33
33	34	33	34	33	34	33	34
34	35	34	35	34	35	34	35
35	36	35	36	35	36	35	36

10-12

Total number of Acres 10,235.00

Survey Designated	By Whom Surveyed	Date of Contract	Amount of Survey	When Surveyed	Area of the Survey
Township	John J. ...	16 Aug 1837	10,235.00	1837	10,235.00
Subdivisions	John J. ...	16 Aug 1837	10,235.00	1837	10,235.00

The above map of Township No 18 N. of Range No 13 West of the Principal Meridian of Michigan is a duly certified and approved copy of the survey done in full and official manner, examined and approved by the County Clerk's Office, Grand Haven, Mich. 24th 1837.

*John J. ...* Secy. Com.