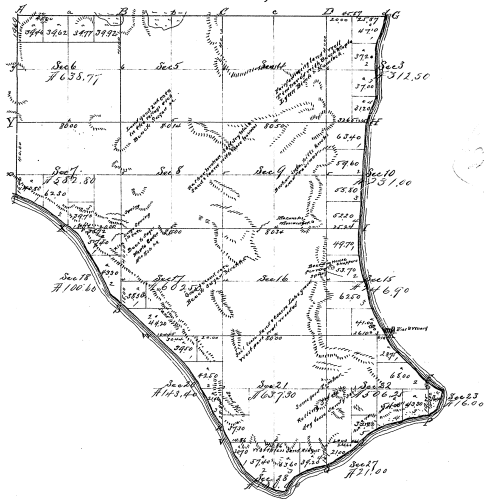


Township No. 31 N. Range No. 16 W. Mer. Mich.

Part of N. Marquette Island



Scale Meridian

Total Number of Acres 7419.42

Survey Designed	By Whom Surveyed	Date of Closure	Amount of Survey Sq. Mts.	When Surveyed	Remarks
Township Lines	D. Padden	April 24/84	3.00	Apr 1844	
Subdivisions	D. Padden		30.23	Apr 1844	

The above Map of Township No. 31 North of Range No. 16 West of the Principal Meridian, Michigan, is strictly conformable to the field notes of the survey thereof on file in this office, which have been examined and approved.

Surveyor General's Office
Detroit March 16 1885

Lewis Logan
Surveyor General

1876
L. Logan
1876

