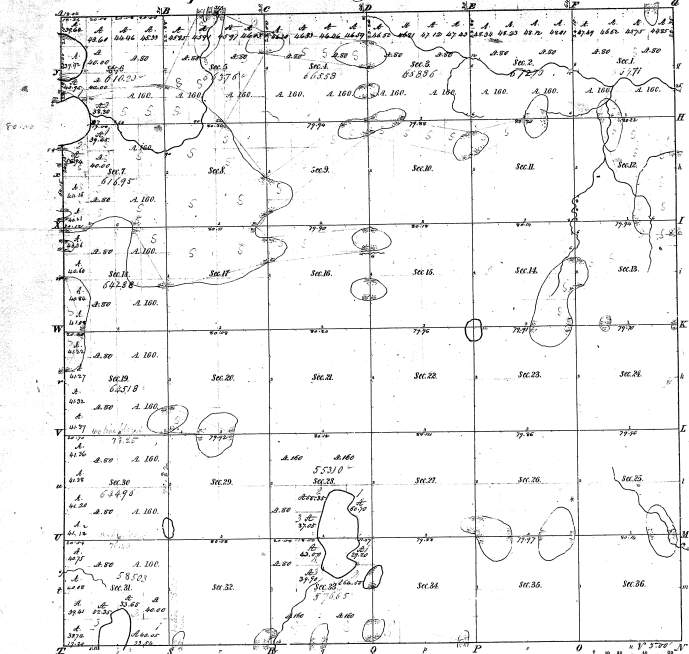


Township N^o 15 N. Range N^o 7 West Mer. (Mich.)



Numbers of Sections.

Section	Acres	Section	Acres
1	360.00	13	360.00
2	360.00	14	360.00
3	360.00	15	360.00
4	360.00	16	360.00
5	360.00	17	360.00
6	360.00	18	360.00
7	360.00	19	360.00
8	360.00	20	360.00
9	360.00	21	360.00
10	360.00	22	360.00
11	360.00	23	360.00
12	360.00	24	360.00
13	360.00	25	360.00
14	360.00	26	360.00
15	360.00	27	360.00
16	360.00	28	360.00
17	360.00	29	360.00
18	360.00	30	360.00
19	360.00	31	360.00
20	360.00	32	360.00
21	360.00	33	360.00
22	360.00	34	360.00
23	360.00	35	360.00
24	360.00	36	360.00

12-20

18-23

Total number of Acres 12,960.00

Survey designated	By whom surveyed	Date of Contract	Amount of Survey	When Surveyed
Township lines	J. H. ...	12/18/37	36.00	1837
Subdivisions	J. H. ...	12/18/37	60.00	1837

The above map of Township N^o 15 North of Range N^o 7 West of the Principal Meridian with its plan is hereby approved to be the field notes of the survey thereon filed in this office, which have been examined and approved.

Surveyor General's Office
Grand Rapids, Mich. 12-18-37

J. H. ...