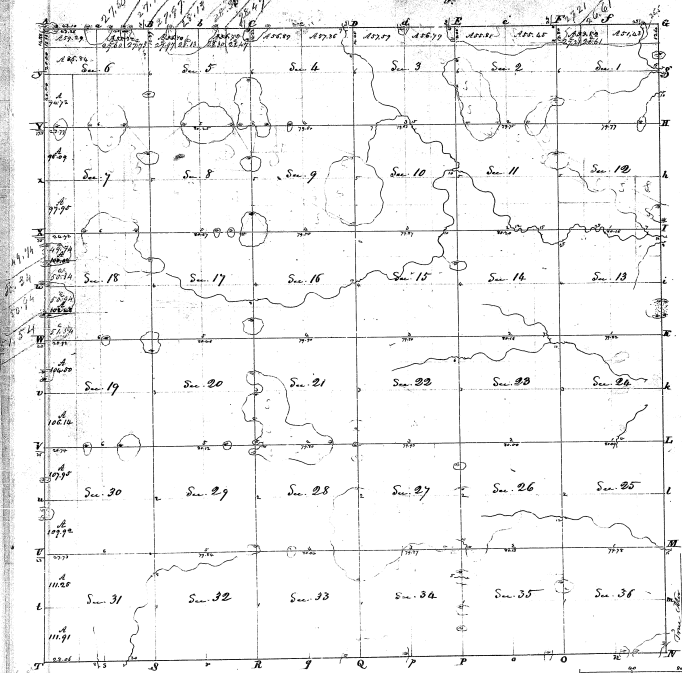


Township N. XVI North, Range N. II East Mer. (Little Ton)



Continued			
Sections	Area Acs	Sections	Area Acs
Ac. 16 1	51.63	Ac. 17	32.0
Ac. 18	30	Ac. 18 1/2	25
Ac. 19	28.72	Ac. 19 1/2	25
Ac. 20	30	Ac. 20 1/2	25
Ac. 21	32.0	Ac. 21 1/2	25
Ac. 22	28.0	Ac. 22 1/2	25
Ac. 23	30	Ac. 23 1/2	25
Ac. 24	32.0	Ac. 24 1/2	25
Ac. 25	28.72	Ac. 25 1/2	25
Ac. 26	30	Ac. 26 1/2	25
Ac. 27	32.0	Ac. 27 1/2	25
Ac. 28	30	Ac. 28 1/2	25
Ac. 29	28.72	Ac. 29 1/2	25
Ac. 30	30	Ac. 30 1/2	25
Ac. 31	32.0	Ac. 31 1/2	25
Ac. 32	28.0	Ac. 32 1/2	25
Ac. 33	30	Ac. 33 1/2	25
Ac. 34	32.0	Ac. 34 1/2	25
Ac. 35	30	Ac. 35 1/2	25
Ac. 36	28.72	Ac. 36 1/2	25
Ac. 37	30	Ac. 37 1/2	25
Ac. 38	32.0	Ac. 38 1/2	25
Ac. 39	30	Ac. 39 1/2	25
Ac. 40	28.72	Ac. 40 1/2	25
Ac. 41	30	Ac. 41 1/2	25
Ac. 42	32.0	Ac. 42 1/2	25
Ac. 43	30	Ac. 43 1/2	25
Ac. 44	28.72	Ac. 44 1/2	25
Ac. 45	30	Ac. 45 1/2	25
Ac. 46	32.0	Ac. 46 1/2	25
Ac. 47	30	Ac. 47 1/2	25
Ac. 48	28.72	Ac. 48 1/2	25
Ac. 49	30	Ac. 49 1/2	25
Ac. 50	32.0	Ac. 50 1/2	25
Ac. 51	30	Ac. 51 1/2	25
Ac. 52	28.72	Ac. 52 1/2	25
Ac. 53	30	Ac. 53 1/2	25
Ac. 54	32.0	Ac. 54 1/2	25
Ac. 55	30	Ac. 55 1/2	25
Ac. 56	28.72	Ac. 56 1/2	25
Ac. 57	30	Ac. 57 1/2	25
Ac. 58	32.0	Ac. 58 1/2	25
Ac. 59	30	Ac. 59 1/2	25
Ac. 60	28.72	Ac. 60 1/2	25
Ac. 61	30	Ac. 61 1/2	25
Ac. 62	32.0	Ac. 62 1/2	25
Ac. 63	30	Ac. 63 1/2	25
Ac. 64	28.72	Ac. 64 1/2	25
Ac. 65	30	Ac. 65 1/2	25
Ac. 66	32.0	Ac. 66 1/2	25
Ac. 67	30	Ac. 67 1/2	25
Ac. 68	28.72	Ac. 68 1/2	25
Ac. 69	30	Ac. 69 1/2	25
Ac. 70	32.0	Ac. 70 1/2	25
Ac. 71	30	Ac. 71 1/2	25
Ac. 72	28.72	Ac. 72 1/2	25
Ac. 73	30	Ac. 73 1/2	25
Ac. 74	32.0	Ac. 74 1/2	25
Ac. 75	30	Ac. 75 1/2	25
Ac. 76	28.72	Ac. 76 1/2	25
Ac. 77	30	Ac. 77 1/2	25
Ac. 78	32.0	Ac. 78 1/2	25
Ac. 79	30	Ac. 79 1/2	25
Ac. 80	28.72	Ac. 80 1/2	25
Ac. 81	30	Ac. 81 1/2	25
Ac. 82	32.0	Ac. 82 1/2	25
Ac. 83	30	Ac. 83 1/2	25
Ac. 84	28.72	Ac. 84 1/2	25
Ac. 85	30	Ac. 85 1/2	25
Ac. 86	32.0	Ac. 86 1/2	25
Ac. 87	30	Ac. 87 1/2	25
Ac. 88	28.72	Ac. 88 1/2	25
Ac. 89	30	Ac. 89 1/2	25
Ac. 90	32.0	Ac. 90 1/2	25
Ac. 91	30	Ac. 91 1/2	25
Ac. 92	28.72	Ac. 92 1/2	25
Ac. 93	30	Ac. 93 1/2	25
Ac. 94	32.0	Ac. 94 1/2	25
Ac. 95	30	Ac. 95 1/2	25
Ac. 96	28.72	Ac. 96 1/2	25
Ac. 97	30	Ac. 97 1/2	25
Ac. 98	32.0	Ac. 98 1/2	25
Ac. 99	30	Ac. 99 1/2	25
Ac. 100	28.72	Ac. 100 1/2	25
Total		3200.00	

Surveyed in May & June, 1831, by Henry Lister, S. S.

The above Map, of Township N. XVI North, Range N. II East of the principal Meridian (the 6th) is correctly conformable to the field notes of the Surveyors thereof, on file in this Office, which have been examined & approved.
Surveyor General's Office.
Cincinnati, Aug 3^d 1832. } M. T. Williams

5-10