

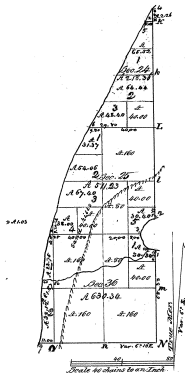
Township N^o 15 North, Range N^o 19 West Mer. (Mich.)

9-13

9-13

Boundaries of Lakes.	
East Boundary	1858
Section 1	
1	1711.0 1857
2	1720.39 1857
3	1730.0 1858
4	1740.0 1858
5	1750.0 1858
6	1760.0 1858
7	1770.0 1858
8	1780.0 1858
9	1790.0 1858
10	1800.0 1858
Section 2	
1	1790.0 1857
2	1780.0 1857
3	1770.0 1857
4	1760.0 1857

Lake Michigan.



Total Area of Area, 1425.09				
Surveyed	By whom	Date of Survey	Area	When all paid in
1	W. H. B. B. B.	1857	1.97	1858
2	W. H. B. B. B.	1858	6.43	1859
3	W. H. B. B. B.	1859	6.65	1859

This above Map, of Township N^o 15 North, of Range N^o 19 West of the Principal Meridian, Michigan, is hereby confirmed to the field notes of the survey thereof on file in this office, which have been examined and approved.

Surveyor General's Office,
Greenwell, Mich. (1859)

W. H. B. B. B. Dec. 1859