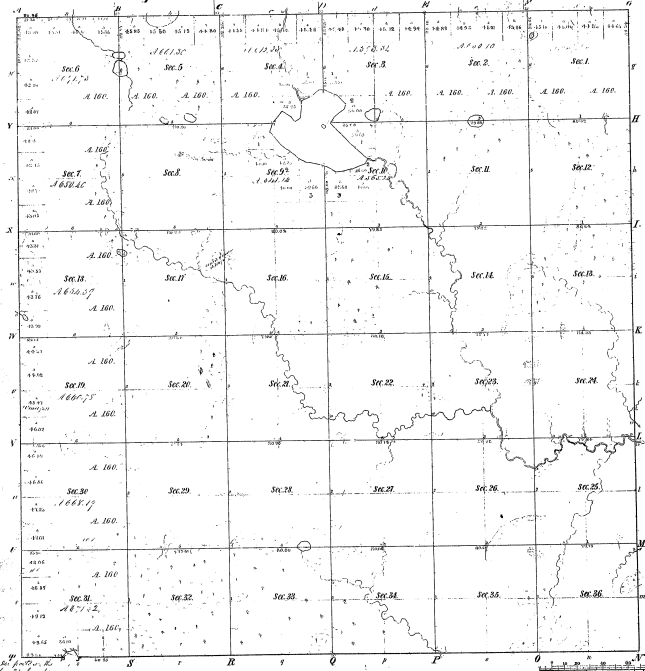


Re Survey
Township N^o 22, 1: Range N^o 4 East. Mer: Mich



Warrants of					
Prob. Cause	1854	Prob. Cause	1854	Prob. Cause	1854

21-36

21-36

Total number of Acres: 12,900.32

By whom surveyed
 Township lines
 Subdivisions

By whom surveyed	Date of Contract	Amount of Survey	When Surveyed	Run for and out to the Section corners
Louis L. Levee	March 10, 1854	65 1/2	1854	1141
Louis L. Levee	March 20, 1854	65 1/2	1854	1142

The above Map of Township N^o 22, 1, E. 1/4, of Range N^o 4 East of the Principal Meridian Michigan, is truly conformable to the field notes of the survey thereon filed in the Office, which have been examined and approved.

Surveyor General's Office
 Detroit, Feb. 25, 1860

Revised

Louis Levee, Sur. Gen.