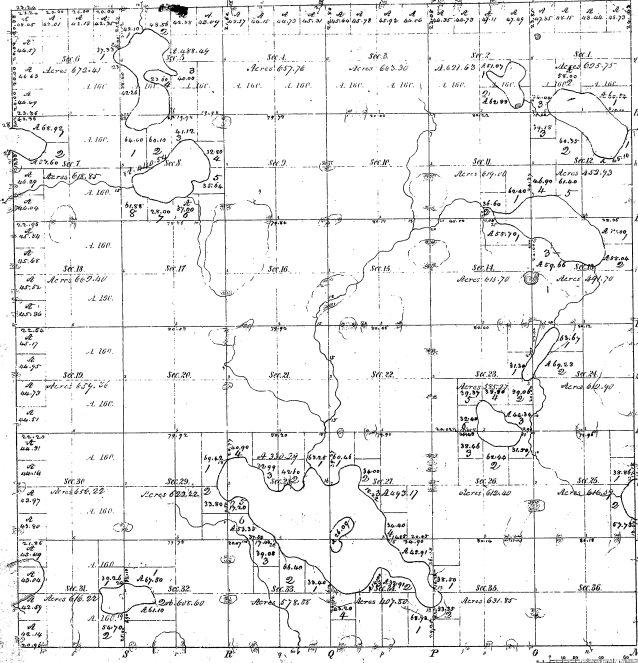


Re-Survey
 Township 1st 23rd N. Range 4th E., Mich. Mich.



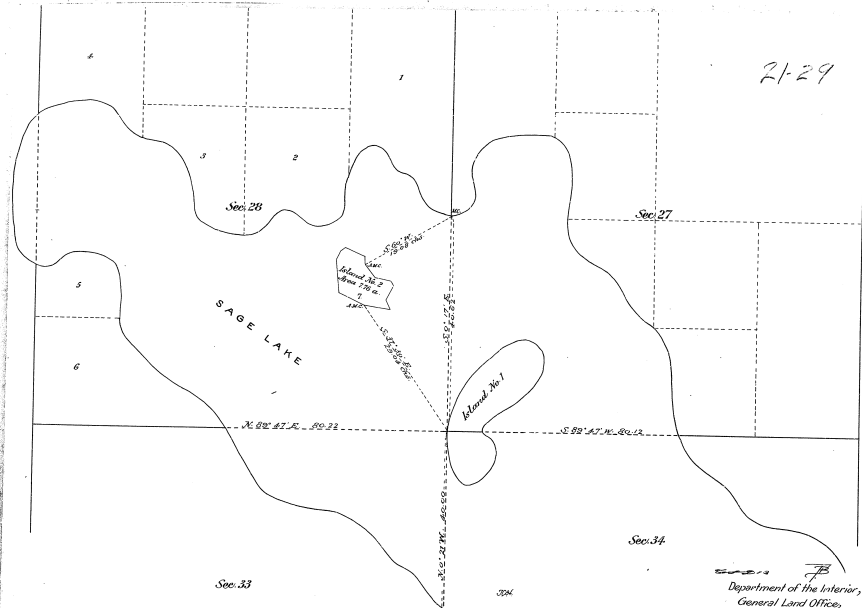
Township 1 st 23 rd N. Range 4 th E. Mich. Mich.	21-29
---	-------

Total number of acres 21,423.23

Township	Range	Section	Acres	Date	Surveys	Total
Township 1 st 23 rd N.	Range 4 th E.	36	21,423.23	1857-58	1538	1529

The above map of Township 1st 23rd N. of Range 4th E. East of the Principal Meridian, Michigan, is hereby confirmed to the field notes of the survey thereon on file in the office and has been examined and approved.

Register General's Office
 East Lansing, July 11, 1905
William Johnston
 Register General



21-29

21-29 ③

X V 12345

Department of the Interior,
General Land Office,
Washington, D.C., Feb. 19, 1907.

The above plat of an Island in Sage Lake, in Sec. 28, T²³N., R. 4 E., Mich. Meridian, Michigan, is a correct plat of a survey executed by W^m A. Weeks, U.S. Deputy Surveyor, in pursuance of special instructions from the Commissioner of the General Land Office, bearing date April 13, 1905, and is strictly conformable to the field notes of the survey hereof on file in this office, which have been examined and approved.

W. H. Richards
Commissioner in office
U.S. Surveyor General for Michigan