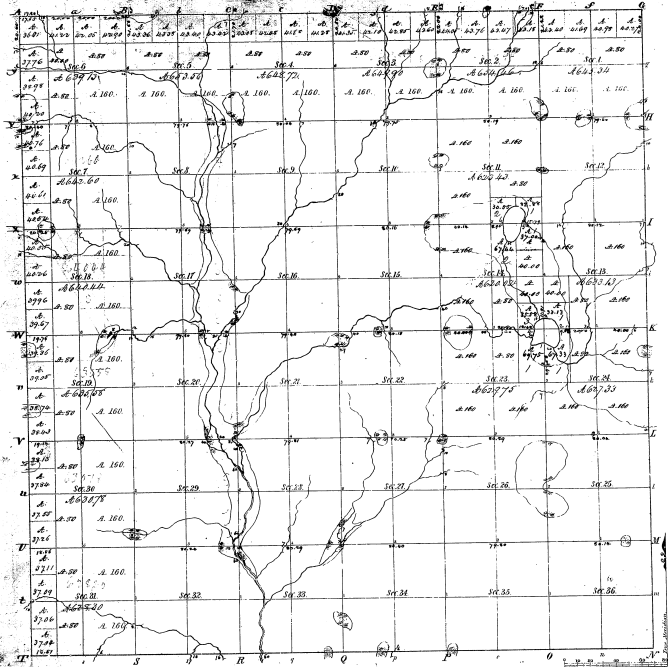


Township N. 18 Range N. 10 West Mer. Mic.



Mileage of Lines		
Foot Courses 1818	Foot Courses 1828	Foot Courses 1838
1. 17410	14.25	
2. 22200	8.50	
3. 22200	8.50	
4. 22200	8.50	
5. 22200	8.50	
6. 22200	8.50	
7. 22200	8.50	
8. 22200	8.50	
9. 22200	8.50	
10. 22200	8.50	
11. 22200	8.50	
12. 22200	8.50	
13. 22200	8.50	
14. 22200	8.50	
15. 22200	8.50	
16. 22200	8.50	
17. 22200	8.50	
18. 22200	8.50	
19. 22200	8.50	
20. 22200	8.50	
21. 22200	8.50	
22. 22200	8.50	
23. 22200	8.50	
24. 22200	8.50	
25. 22200	8.50	
26. 22200	8.50	
27. 22200	8.50	
28. 22200	8.50	
29. 22200	8.50	
30. 22200	8.50	
31. 22200	8.50	
32. 22200	8.50	
33. 22200	8.50	
34. 22200	8.50	
35. 22200	8.50	
36. 22200	8.50	
37. 22200	8.50	
38. 22200	8.50	
39. 22200	8.50	
40. 22200	8.50	
41. 22200	8.50	
42. 22200	8.50	
43. 22200	8.50	
44. 22200	8.50	
45. 22200	8.50	
46. 22200	8.50	
47. 22200	8.50	
48. 22200	8.50	
49. 22200	8.50	
50. 22200	8.50	

Survey Disposition	By Whom Surveyed	Date of Conduct	Amount of Survey	When Surveyed	When the Survey was Made
Township lines	John H. Hedges	from 10. 1837	25. 76. 51	12 th of 1837	5 th of 1838
Section lines	Samuel	from 30. 1838	61. 54. 48	2 ^d of 1838	1 st of 1839

Total number of Acres 33,602.67

The above Map of Township N. 18 N. of Range N. 10 W. of 16th Principal Meridian, Mer. Mic. is hereby confirmed to the field notes of the survey thereof on file in this Office, which have been examined and approved.

Surveyor General's Office
 Cincinnati, Oct. 8, 1839

P. D. B. Jones Surveyor Genl.