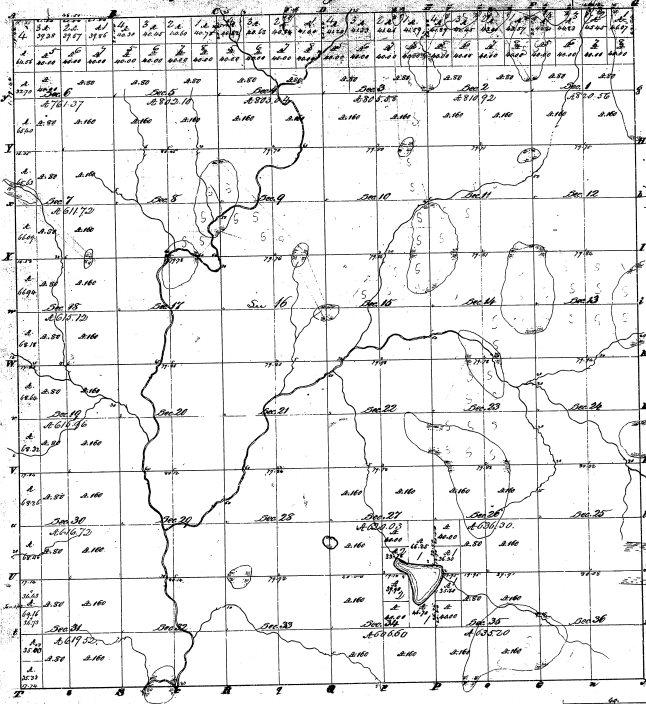


Township N. 20 N., Range N. 10 West Mer. (Mich.)



Number of Acres  
- 64 22 24 28 32

1	1774.00	8.00
2	1774.00	8.00
3	1774.00	8.00
4	1774.00	8.00
5	1774.00	8.00
6	1774.00	8.00
7	1774.00	8.00
8	1774.00	8.00
9	1774.00	8.00
10	1774.00	8.00
11	1774.00	8.00
12	1774.00	8.00

11-3  
11-3

Total number of Acres 2382174

Survey	By whom surveyed	Date of Survey	Area of Survey	When Surveyed	Who Surveyed
1. Boundary	John Chubb	Apr. 24 1838	5 74 25	3 <sup>d</sup> 1838	Geo. H. B. S.
2. Section	John Chubb	Apr. 24 1838	17 64 40	3 <sup>d</sup> 1838	Geo. H. B. S.
3. Section	John Chubb	Apr. 24 1838	62 37 30	3 <sup>d</sup> 1838	Geo. H. B. S.

The above Map of Township N. 20 N., of Range N. 10 W. of the Township Meridian, Michigan, is hereby certified to be the full, true and correct copy of the original map, as the same appears in the files of the Surveyor General's Office, which have been examined and approved.

Surveyor General's Office  
Michigan, this 24<sup>th</sup> day of May 1853

*W. C. Carey*