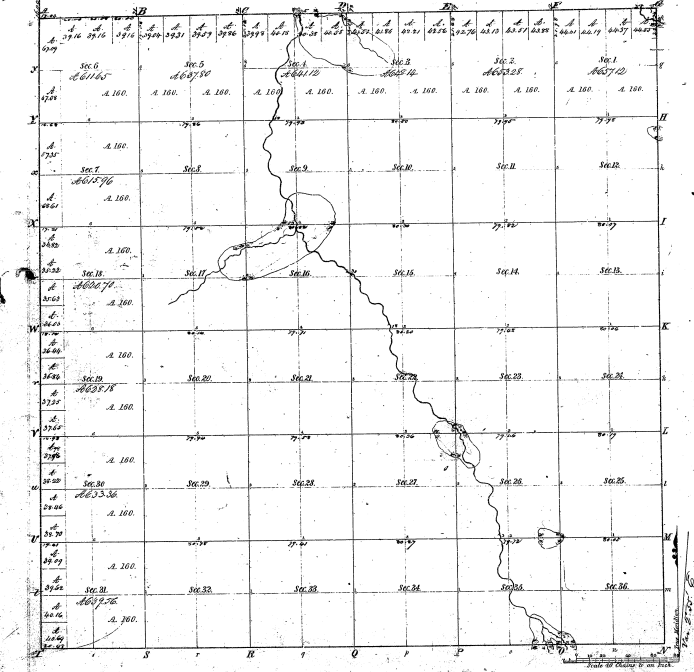


Township No 25 N. Range No 1 E.

Mex. Mich.



Measures of			
Perch	Chains	Perch	Chains

21-24

21-24

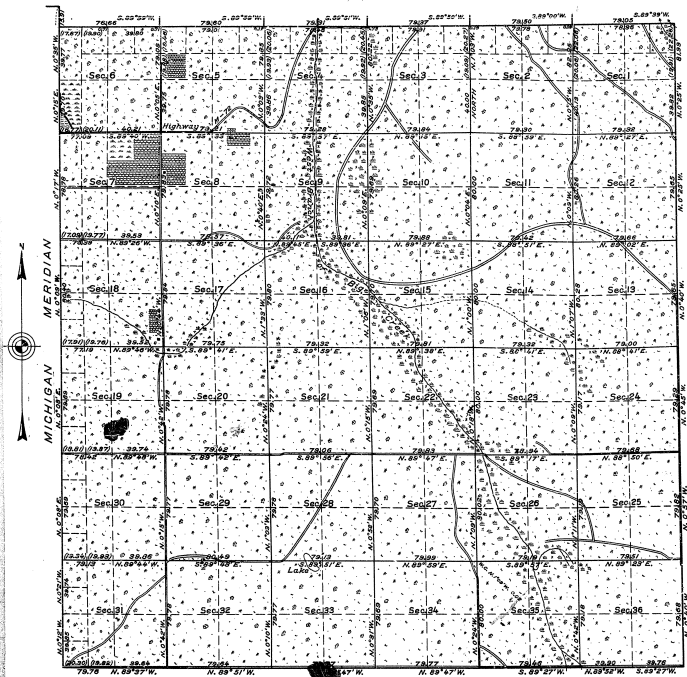
Total number of Acres. 20,976.37

Township lines	By whom Surveyed	Date of Cadastral	Amount of Survey	How Surveyed
	William H. Brown	Aug 11/1857	25,31 3/4	by 1857 1858
Subdivisions	William H. Brown	Aug 11/1857	57 3/4 - 36	by 1857 1858 1859

The above map of Township No 25 N. of Range No 1 East of the Principal Meridian, Michigan, is a true and correct copy of the survey filed on file in the office of the Surveyor General of Michigan, April 25/1864.

Surveyor General of Michigan
(Signature)

TOWNSHIP No. 25 NORTH, RANGE No. 1 EAST, MICHIGAN MERIDIAN, MICHIGAN.
DEPENDENT RESURVEY.



21-24

21-24

MEMORANDUM.

THIS PLAT OF THE RESURVEY OF TOWNSHIP 25 NORTH, RANGE 1 EAST, DELINEATES A RETRACEMENT AND REESTABLISHMENT OF THE LINES OF THE ORIGINAL SURVEY AS SHOWN UPON THE PLAT APPROVED JUNE 24, 1840, IN THEIR TRUE ORIGINAL POSITIONS ACCORDING TO THE BEST AVAILABLE EVIDENCE OF THE ORIGINAL CORNERS. ALL DIFFERENCES BETWEEN THE MEASUREMENTS SHOWN ON THE ORIGINAL PLAT AND THOSE DERIVED IN THE RETRACEMENT HAVE BEEN DISTRIBUTED PROPORTIONALLY BETWEEN THE ACCEPTED CORNERS IN ACCORDANCE WITH SURVEYING RULES. REFERENCE WILL BE MADE TO THE ORIGINAL PLAT FOR THE SHOWING OF AREAS AND MORE DETAILED DESCRIPTIONS OF THE VARIOUS SMALLER SUBDIVISIONS.

OFFICE OF U. S. SUPERVISOR OF SURVEYS.
DENVER, COLORADO, MAY 7, 1931.

THE ABOVE PLAT OF TOWNSHIP NO. 25 NORTH, RANGE NO. 1 EAST, OF THE MICHIGAN MERIDIAN, IN THE STATE OF MICHIGAN, IS STRICTLY CONFORMABLE TO THE FIELD NOTES OF THE RESURVEY THEREOF, WHICH HAVE BEEN EXAMINED AND APPROVED.

Samuel Thomas
U. S. SUPERVISOR OF SURVEYS.

DEPARTMENT OF THE INTERIOR.
GENERAL LAND OFFICE.
WASHINGTON, D. C., MAY 25, 1931.

THE SURVEY REPRESENTED BY THIS PLAT, HAVING BEEN CORRECTLY EXECUTED IN ACCORDANCE WITH THE REQUIREMENTS OF LAW AND THE REGULATIONS OF THIS OFFICE, IS HEREBY ACCEPTED.

W. C. Howell
ASSISTANT COMMISSIONER.

SCALE: 40 CHAINS TO AN INCH.

LINES DESIGNATED	BY WHOM SURVEYED	GROUP NO.	DATE	MILEAGE		WHEN SURVEYED	
				MLS.	CHS.	BEGUN	COMPLETED
EXTERIOR	SUY R. VEAL, U.S.C. ENGINEER,	17	JUNE 1,	24	5.16	AUGUST 20,	OCTOBER 3,
SUBDIVISIONAL	HUGH B. CRAWFORD, U.S. TRANSITMAN.		1929,	59	50.24	1929.	1929.