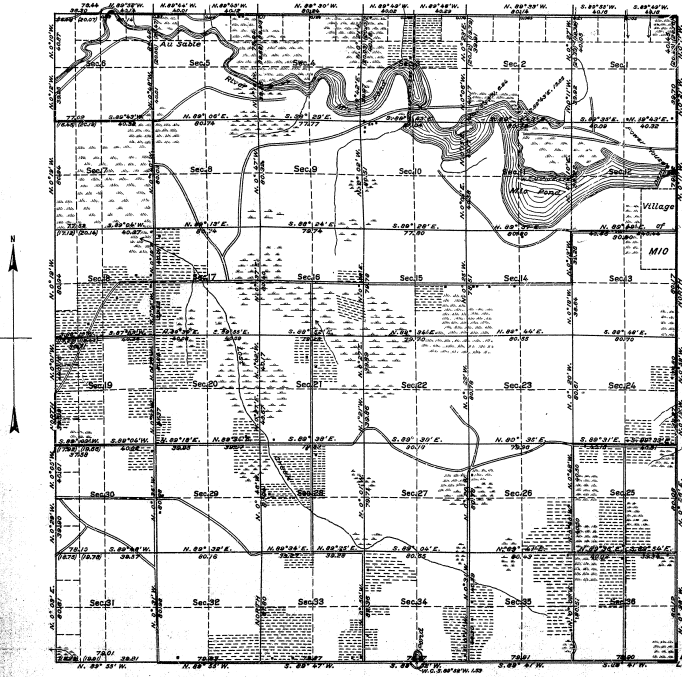


TOWNSHIP No. 26 NORTH, RANGE No. 2 EAST, MICHIGAN MERIDIAN, MICHIGAN.
DEPENDENT RESURVEY.

21-18

21-18



MEMORANDUM

THIS PLAT OF THE RESURVEY OF TOWNSHIP 26 NORTH, RANGE 2 EAST, DELINEATES A RETRACEMENT AND REESTABLISHMENT OF THE LINES OF THE ORIGINAL SURVEY AS SHOWN UPON THE PLAT APPROVED JUNE 19, 1840, IN THEIR TRUE ORIGINAL POSITIONS ACCORDING TO THE BEST AVAILABLE EVIDENCE OF THE POSITION OF THE ORIGINAL CORNERS. ALL DIFFERENCES BETWEEN THE MEASUREMENTS SHOWN ON THE ORIGINAL PLAT AND THOSE DERIVED IN THE RETRACEMENT HAVE BEEN DISTRIBUTED PROPORTIONALLY BETWEEN ACCEPTED CORNERS IN ACCORDANCE WITH SURVEYING RULES. REFERENCE WILL BE MADE TO THE ORIGINAL PLAT FOR THE SHOWING OF AREAS AND MORE DETAILED DESCRIPTIONS OF THE VARIOUS SMALLER SUBDIVISIONS.

THE RESURVEY WAS EXECUTED PURSUANT TO AUTHORITY CONTAINED IN GENERAL LAND OFFICE LETTER 1448045 ET AL., "E" DATED MARCH 21, 1932, WHICH BEARS DEPARTMENTAL APPROVAL UNDER DATE OF MARCH 22, 1932.

NOTE

EXCEPT WHERE CLEARED FOR CULTIVATION, THE TOWNSHIP SUPPORTS A SCATTERING TO FAIR GROWTH OF BLACK OAK, JACK PINE, AND POPULAR TIMBER ON THE UPLAND AREAS, WITH SMALL CEDAR, SPRUCE, AND TANKRACK IN THE SWAMPS. THE TIMBER IS OF LITTLE COMMERCIAL VALUE.

OFFICE OF U. S. SUPERVISOR OF SURVEYS.

DENVER, COLORADO, OCTOBER 7, 1935.

THE ABOVE PLAT OF TOWNSHIP NO. 26 NORTH, RANGE NO. 2 EAST OF THE MICHIGAN MERIDIAN, IN THE STATE OF MICHIGAN, IS STRICTLY CONFORMABLE TO THE FIELD NOTES OF THE RESURVEY THEREOF, WHICH HAVE BEEN EXAMINED AND APPROVED.

Wm. M. Pomeroy
U. S. SUPERVISOR OF SURVEYS.

DEPARTMENT OF THE INTERIOR.
GENERAL LAND OFFICE.

WASHINGTON, D. C., MAY 7, 1937.

THE RESURVEY REPRESENTED BY THIS PLAT, HAVING BEEN CORRECTLY EXECUTED IN ACCORDANCE WITH THE REQUIREMENTS OF LAW AND THE REGULATIONS OF THIS OFFICE, IS HEREBY ACCEPTED.

Antonette S. Smith
ASSISTANT COMMISSIONER.

SCALE: 40 CHAINS TO AN INCH.

AREA RESURVEYED, 22,369.72 ACRES.

LINES DESIGNATED	BY WHOM SURVEYED	GROUP NO.	DATE	MILEAGE		WHEN SURVEYED	
				MLS.	CHS.	BEGUN	COMPLETED
EXTERIOR	GUY R. VEAL,	36	JUNE 08,	12	0.95	AUG. 10,	OCT. 2,
SUBDIVISIONAL	U. S. C. ENGINEER.		1935.	59	79.05	1935.	1935.