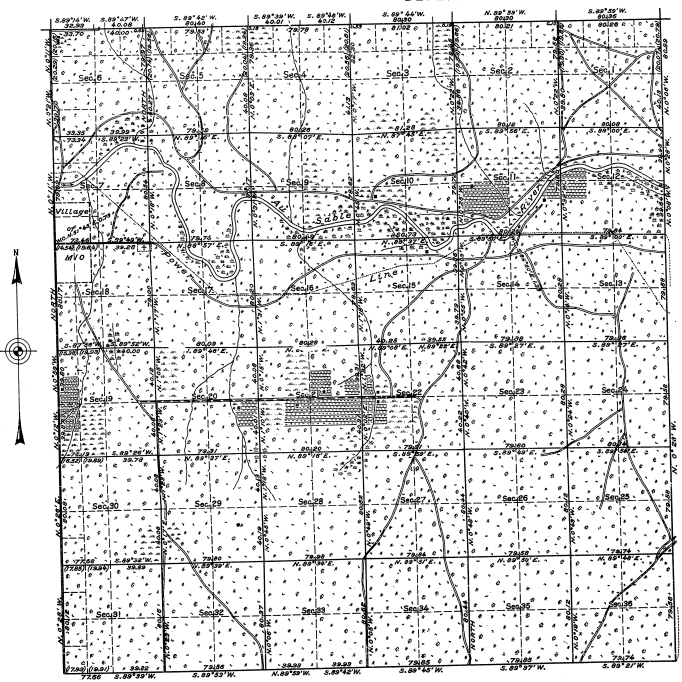


TOWNSHIP No.26 NORTH, RANGE No.3 EAST, MICHIGAN MERIDIAN, MICHIGAN.
DEPENDENT RESURVEY.



MEMORANDUM.

THIS PLAT OF THE RESURVEY OF TOWNSHIP 26 NORTH, RANGE 3 EAST, DELINEATES A RETRACEMENT AND REESTABLISHMENT OF THE LINES OF THE ORIGINAL SURVEY AS SHOWN UPON THE PLAT APPROVED JUNE 25, 1840, IN THEIR TRUE ORIGINAL POSITIONS ACCORDING TO THE BEST AVAILABLE EVIDENCE OF THE POSITION OF THE ORIGINAL CORNERS. ALL DIFFERENCES BETWEEN THE MEASUREMENTS SHOWN ON THE ORIGINAL PLAT AND THOSE DERIVED IN THE RETRACEMENT HAVE BEEN DISTRIBUTED PROPORTIONALLY BETWEEN ACCEPTED CORNERS IN ACCORDANCE WITH SURVEYING RULES.

REFERENCE WILL BE MADE TO THE ORIGINAL PLAT FOR THE SHOWING OF AREAS AND MORE DETAILED DESCRIPTIONS OF THE VARIOUS SMALLER SUBDIVISIONS.

THE RESURVEY WAS EXECUTED PURSUANT TO AUTHORITY CONTAINED IN GENERAL LAND OFFICE LETTER 1362558 "M" DATED FEBRUARY 20, 1930, WHICH BEARS DEPARTMENTAL APPROVAL UNDER DATE OF FEBRUARY 24, 1930.

OFFICE OF U. S. SUPERVISOR OF SURVEYS.
DENVER, COLORADO, FEBRUARY 25, 1932.

THE ABOVE PLAT OF TOWNSHIP NO. 26 NORTH, RANGE NO. 3 EAST OF THE MICHIGAN MERIDIAN, IN THE STATE OF MICHIGAN, IS STRICTLY CONFORMABLE TO THE FIELD NOTES OF THE RESURVEY THEREOF, WHICH HAVE BEEN EXAMINED AND APPROVED.

Smith Duman
U. S. SUPERVISOR OF SURVEYS.

DEPARTMENT OF THE INTERIOR.
GENERAL LAND OFFICE.

WASHINGTON, D. C., MARCH 24, 1932.

THE SURVEY REPRESENTED BY THIS PLAT, HAVING BEEN CORRECTLY EXECUTED IN ACCORDANCE WITH THE REQUIREMENTS OF LAW AND THE REGULATIONS OF THIS OFFICE, IS HEREBY ACCEPTED.

Wm. C. Shreve
ASSISTANT COMMISSIONER.

SCALE: 40 CHAINS TO AN INCH. AREA RESURVEYED: 22820.29 ACRES.

LINE DESIGNATED	BY WHOM SURVEYED	GROUP NO.	DATE	MILEAGE WLS. CHS.	WHEN SURVEYED BEGUN	WHEN SURVEYED COMPLETED
EXTERIOR	GUY R. VEAL,	20	APRIL 11,	17 73.54	JUNE 20,	SEPT. 17,
SUBDIVISIONAL	U. S. C. ENGINEER.		1930.	59 58.01	1930.	1930.

21-19

21-19