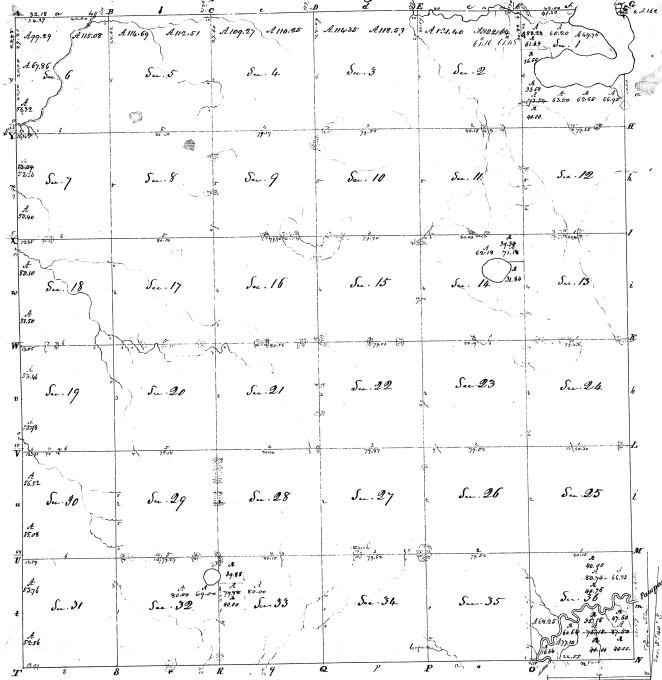


Township N. 22 south, Range N. 4V west, Mer. (Mic. Ter.)



Contents		Balance	
No. Acres	Value	No. Acres	Value
38	1.60	61	18
39	6.76	62	77
40	62.20	63	10
41	62.20	64	10
42	62.20	65	27
43	62.20	66	30
44	62.20	67	30
45	62.20	68	30
46	62.20	69	30
47	62.20	70	30
48	62.20	71	30
49	62.20	72	30
50	62.20	73	30
51	62.20	74	30
52	62.20	75	30
53	62.20	76	30
54	62.20	77	30
55	62.20	78	30
56	62.20	79	30
57	62.20	80	30
58	62.20	81	30
59	62.20	82	30
60	62.20	83	30
61	62.20	84	30
62	62.20	85	30
63	62.20	86	30
64	62.20	87	30
65	62.20	88	30
66	62.20	89	30
67	62.20	90	30
68	62.20	91	30
69	62.20	92	30
70	62.20	93	30
71	62.20	94	30
72	62.20	95	30
73	62.20	96	30
74	62.20	97	30
75	62.20	98	30
76	62.20	99	30
77	62.20	100	30
78	62.20	101	30
79	62.20	102	30
80	62.20	103	30
81	62.20	104	30
82	62.20	105	30
83	62.20	106	30
84	62.20	107	30
85	62.20	108	30
86	62.20	109	30
87	62.20	110	30
88	62.20	111	30
89	62.20	112	30
90	62.20	113	30
91	62.20	114	30
92	62.20	115	30
93	62.20	116	30
94	62.20	117	30
95	62.20	118	30
96	62.20	119	30
97	62.20	120	30
98	62.20	121	30
99	62.20	122	30
100	62.20	123	30
101	62.20	124	30
102	62.20	125	30
103	62.20	126	30
104	62.20	127	30
105	62.20	128	30
106	62.20	129	30
107	62.20	130	30
108	62.20	131	30
109	62.20	132	30
110	62.20	133	30
111	62.20	134	30
112	62.20	135	30
113	62.20	136	30
114	62.20	137	30
115	62.20	138	30
116	62.20	139	30
117	62.20	140	30
118	62.20	141	30
119	62.20	142	30
120	62.20	143	30
121	62.20	144	30
122	62.20	145	30
123	62.20	146	30
124	62.20	147	30
125	62.20	148	30
126	62.20	149	30
127	62.20	150	30
128	62.20	151	30
129	62.20	152	30
130	62.20	153	30
131	62.20	154	30
132	62.20	155	30
133	62.20	156	30
134	62.20	157	30
135	62.20	158	30
136	62.20	159	30
137	62.20	160	30
138	62.20	161	30
139	62.20	162	30
140	62.20	163	30
141	62.20	164	30
142	62.20	165	30
143	62.20	166	30
144	62.20	167	30
145	62.20	168	30
146	62.20	169	30
147	62.20	170	30
148	62.20	171	30
149	62.20	172	30
150	62.20	173	30
151	62.20	174	30
152	62.20	175	30
153	62.20	176	30
154	62.20	177	30
155	62.20	178	30
156	62.20	179	30
157	62.20	180	30
158	62.20	181	30
159	62.20	182	30
160	62.20	183	30
161	62.20	184	30
162	62.20	185	30
163	62.20	186	30
164	62.20	187	30
165	62.20	188	30
166	62.20	189	30
167	62.20	190	30
168	62.20	191	30
169	62.20	192	30
170	62.20	193	30
171	62.20	194	30
172	62.20	195	30
173	62.20	196	30
174	62.20	197	30
175	62.20	198	30
176	62.20	199	30
177	62.20	200	30

Surveyed in January & February 1830, by Geo. W. Harrison & Co.