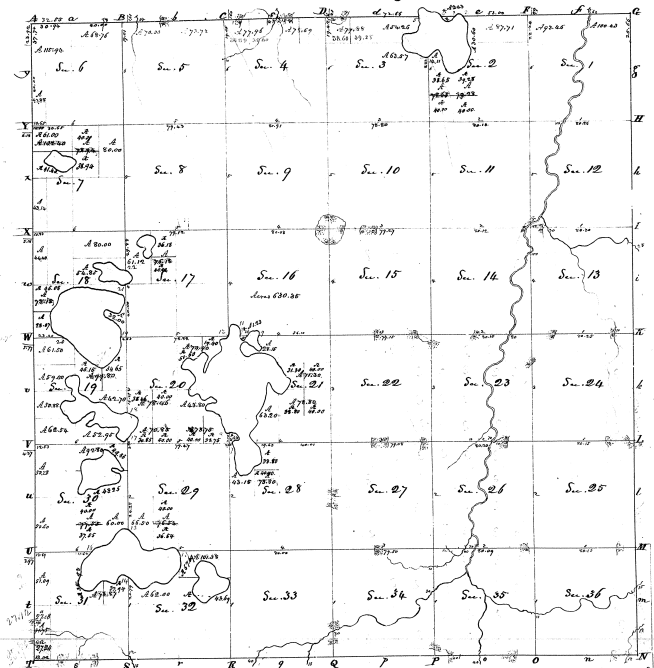


Township N. III south, Range N. XIV west Mer. (Mic. Tor.)



Surveyed in Dec. 1829 & Jan'y 1830 - by William Cookfield & S. S. Cook

Contract		Contract	
Acres	Value	Acres	Value
3/4 Sec 19	100.00	3/4 Sec 19	99.50
1/4 Sec 19	30.00	1/4 Sec 19	61.50
1/4 Sec 19	93.00	1/4 Sec 19	29.00
1/4 Sec 19	30.00	1/4 Sec 19	62.50
1/4 Sec 19	320.00	1/4 Sec 19	52.50
1/4 Sec 19	37.71	1/4 Sec 19	50.55
1/4 Sec 19	80.00	1/4 Sec 19	68.50
1/4 Sec 19	50.61	1/4 Sec 19	70.90
1/4 Sec 19	14.11	1/4 Sec 19	160.00
1/4 Sec 19	11.00	1/4 Sec 19	43.80
1/4 Sec 19	19.25	1/4 Sec 19	75.45
1/4 Sec 19	75.65	1/4 Sec 19	70.85
1/4 Sec 19	52.50	1/4 Sec 19	1.53
1/4 Sec 19	63.07	1/4 Sec 19	71.00
1/4 Sec 19	77.77	1/4 Sec 19	23.15
1/4 Sec 19	80.00	1/4 Sec 19	83.25
1/4 Sec 19	350.00	1/4 Sec 19	80.00
1/4 Sec 19	75.49	1/4 Sec 19	75.80
1/4 Sec 19	80.00	1/4 Sec 19	80.00
1/4 Sec 19	77.96	1/4 Sec 19	4.66
1/4 Sec 19	80.00	1/4 Sec 19	63.00
1/4 Sec 19	320.00	1/4 Sec 19	23.00
1/4 Sec 19	75.72	1/4 Sec 19	64.00
1/4 Sec 19	80.00	1/4 Sec 19	25.00
1/4 Sec 19	70.00	1/4 Sec 19	24.00
1/4 Sec 19	80.00	1/4 Sec 19	27.00
1/4 Sec 19	320.00	1/4 Sec 19	160.00
1/4 Sec 19	15.71	1/4 Sec 19	75.80
1/4 Sec 19	80.00	1/4 Sec 19	63.15
1/4 Sec 19	115.96	1/4 Sec 19	32.00
1/4 Sec 19	100.00	1/4 Sec 19	32.00
1/4 Sec 19	62.50	1/4 Sec 19	74.50
1/4 Sec 19	80.00	1/4 Sec 19	64.00
1/4 Sec 19	75.90	1/4 Sec 19	92.80
1/4 Sec 19	102.40	1/4 Sec 19	80.00
1/4 Sec 19	160.00	1/4 Sec 19	28.25
1/4 Sec 19	80.00	1/4 Sec 19	60.00
1/4 Sec 19	43.14	1/4 Sec 19	77.55
1/4 Sec 19	600.00	1/4 Sec 19	80.00
1/4 Sec 19	9.00	1/4 Sec 19	70.60
1/4 Sec 19	10.00	1/4 Sec 19	73.87
1/4 Sec 19	11.00	1/4 Sec 19	80.00
1/4 Sec 19	12.00	1/4 Sec 19	57.07
1/4 Sec 19	13.00	1/4 Sec 19	160.00
1/4 Sec 19	14.00	1/4 Sec 19	80.00
1/4 Sec 19	15.00	1/4 Sec 19	57.75
1/4 Sec 19	16.00	1/4 Sec 19	100.53
1/4 Sec 19	17.00	1/4 Sec 19	62.00
1/4 Sec 19	18.00	1/4 Sec 19	320.00
1/4 Sec 19	19.00	1/4 Sec 19	60.00
1/4 Sec 19	20.00	1/4 Sec 19	60.00
1/4 Sec 19	21.00	1/4 Sec 19	60.00
1/4 Sec 19	22.00	1/4 Sec 19	60.00
1/4 Sec 19	23.00	1/4 Sec 19	60.00
1/4 Sec 19	24.00	1/4 Sec 19	60.00
1/4 Sec 19	25.00	1/4 Sec 19	60.00
1/4 Sec 19	26.00	1/4 Sec 19	60.00
1/4 Sec 19	27.00	1/4 Sec 19	60.00
1/4 Sec 19	28.00	1/4 Sec 19	60.00
1/4 Sec 19	29.00	1/4 Sec 19	60.00
1/4 Sec 19	30.00	1/4 Sec 19	60.00
1/4 Sec 19	31.00	1/4 Sec 19	60.00
1/4 Sec 19	32.00	1/4 Sec 19	60.00
1/4 Sec 19	33.00	1/4 Sec 19	60.00
1/4 Sec 19	34.00	1/4 Sec 19	60.00
1/4 Sec 19	35.00	1/4 Sec 19	60.00
1/4 Sec 19	36.00	1/4 Sec 19	60.00
1/4 Sec 19	37.00	1/4 Sec 19	60.00
1/4 Sec 19	38.00	1/4 Sec 19	60.00
1/4 Sec 19	39.00	1/4 Sec 19	60.00
1/4 Sec 19	40.00	1/4 Sec 19	60.00
1/4 Sec 19	41.00	1/4 Sec 19	60.00
1/4 Sec 19	42.00	1/4 Sec 19	60.00
1/4 Sec 19	43.00	1/4 Sec 19	60.00
1/4 Sec 19	44.00	1/4 Sec 19	60.00
1/4 Sec 19	45.00	1/4 Sec 19	60.00
1/4 Sec 19	46.00	1/4 Sec 19	60.00
1/4 Sec 19	47.00	1/4 Sec 19	60.00
1/4 Sec 19	48.00	1/4 Sec 19	60.00
1/4 Sec 19	49.00	1/4 Sec 19	60.00
1/4 Sec 19	50.00	1/4 Sec 19	60.00
1/4 Sec 19	51.00	1/4 Sec 19	60.00
1/4 Sec 19	52.00	1/4 Sec 19	60.00
1/4 Sec 19	53.00	1/4 Sec 19	60.00
1/4 Sec 19	54.00	1/4 Sec 19	60.00
1/4 Sec 19	55.00	1/4 Sec 19	60.00
1/4 Sec 19	56.00	1/4 Sec 19	60.00
1/4 Sec 19	57.00	1/4 Sec 19	60.00
1/4 Sec 19	58.00	1/4 Sec 19	60.00
1/4 Sec 19	59.00	1/4 Sec 19	60.00
1/4 Sec 19	60.00	1/4 Sec 19	60.00
1/4 Sec 19	61.00	1/4 Sec 19	60.00
1/4 Sec 19	62.00	1/4 Sec 19	60.00
1/4 Sec 19	63.00	1/4 Sec 19	60.00
1/4 Sec 19	64.00	1/4 Sec 19	60.00
1/4 Sec 19	65.00	1/4 Sec 19	60.00
1/4 Sec 19	66.00	1/4 Sec 19	60.00
1/4 Sec 19	67.00	1/4 Sec 19	60.00
1/4 Sec 19	68.00	1/4 Sec 19	60.00
1/4 Sec 19	69.00	1/4 Sec 19	60.00
1/4 Sec 19	70.00	1/4 Sec 19	60.00
1/4 Sec 19	71.00	1/4 Sec 19	60.00
1/4 Sec 19	72.00	1/4 Sec 19	60.00
1/4 Sec 19	73.00	1/4 Sec 19	60.00
1/4 Sec 19	74.00	1/4 Sec 19	60.00
1/4 Sec 19	75.00	1/4 Sec 19	60.00
1/4 Sec 19	76.00	1/4 Sec 19	60.00
1/4 Sec 19	77.00	1/4 Sec 19	60.00
1/4 Sec 19	78.00	1/4 Sec 19	60.00
1/4 Sec 19	79.00	1/4 Sec 19	60.00
1/4 Sec 19	80.00	1/4 Sec 19	60.00
1/4 Sec 19	81.00	1/4 Sec 19	60.00
1/4 Sec 19	82.00	1/4 Sec 19	60.00
1/4 Sec 19	83.00	1/4 Sec 19	60.00
1/4 Sec 19	84.00	1/4 Sec 19	60.00
1/4 Sec 19	85.00	1/4 Sec 19	60.00
1/4 Sec 19	86.00	1/4 Sec 19	60.00
1/4 Sec 19	87.00	1/4 Sec 19	60.00
1/4 Sec 19	88.00	1/4 Sec 19	60.00
1/4 Sec 19	89.00	1/4 Sec 19	60.00
1/4 Sec 19	90.00	1/4 Sec 19	60.00
1/4 Sec 19	91.00	1/4 Sec 19	60.00
1/4 Sec 19	92.00	1/4 Sec 19	60.00
1/4 Sec 19	93.00	1/4 Sec 19	60.00
1/4 Sec 19	94.00	1/4 Sec 19	60.00
1/4 Sec 19	95.00	1/4 Sec 19	60.00
1/4 Sec 19	96.00	1/4 Sec 19	60.00
1/4 Sec 19	97.00	1/4 Sec 19	60.00
1/4 Sec 19	98.00	1/4 Sec 19	60.00
1/4 Sec 19	99.00	1/4 Sec 19	60.00
1/4 Sec 19	100.00	1/4 Sec 19	60.00

6-2