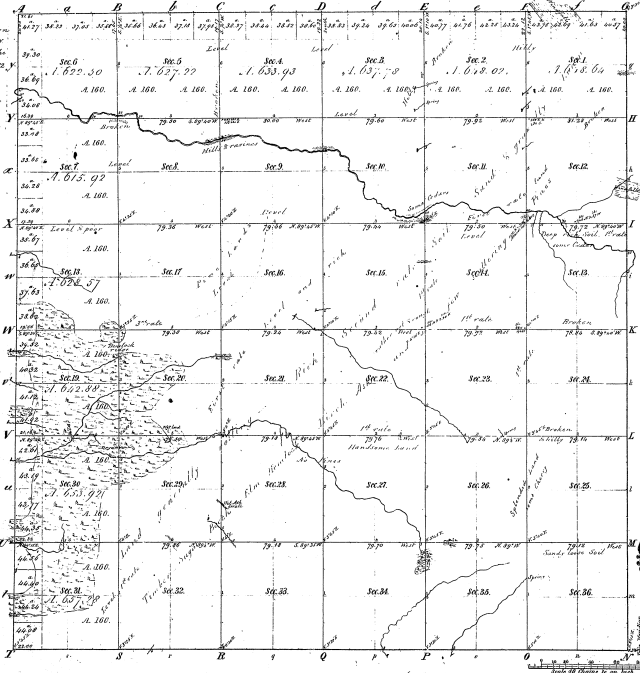


Re-Survey  
Township N<sup>o</sup> 22 N. Range N<sup>o</sup> 12 W. Mer. Mich.

*Note*

The Distances given at the N.W. & S.W. corners of Sec. 16, the N.W. corner of Sec. 19, the S.W. corner of the H. & G. lots are the only places where corners are marked in the old survey and in the old lines found.



Total number of acres 23016.66

Survey Designated	By Whom Surveyed		Date of Contract	Amount of Survey	When Surveyed	How long and in what direction
	By	With				
Township lines	Geo. W. Brown	John G. Brown	Jan. 18 1836	16 36 36	1836	
Subdivisions	George W. Brown	John G. Brown	April 29 1836	16 36 36	1836	

The above copy of the original survey of 22 North of Range 12 West of the Principal Meridian, Michigan, is hereby confirmed to the full value of the survey thereof on file in this office and this has, in witness whereof, approved.  
*George W. Brown, Surveyor*  
 Detroit, Nov. 1, 1858

*Lucius Lyon, Sup. Gen.*

Meanders of	Point Course	Dist	Point Course	Dist	Point Course	Dist
16-33						

16-33

*Correct*