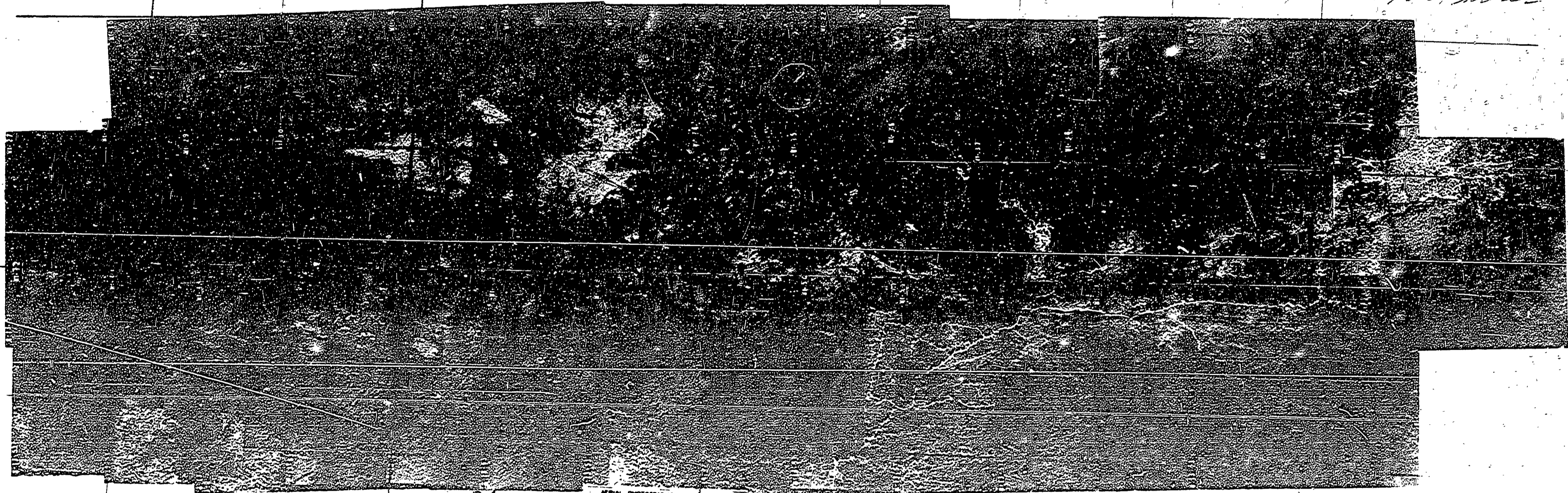


Large Tracts

- Sec 3 = 140
- Sec 4 = 153
- 5 = 50 acres
- 8 = 50 "
- 9 = 175 "
- 10 = 150 "
- 11 = 75 "
- 12 = 15 "

*Estimated area -
about 20,000 sq. miles
average 5 acres =
100+ miles*

*Small piece
comprised at
936 acres total*



AGENCY PHOTOGRAPHIC SOCIETY
MEMBER PHOTOGRAPHY STATE MAP
MICROFILM IN CITY OF CONGRESS
STATE OF PHOTOGRAPHY 1980
DATE OF PHOTOGRAPHY 1980
SERIALS ACQUISITION 1980
LANSING, MICHIGAN U.S.A.

T 50H R 44W

*PORCUPINE MOUNTAINS SP.
Wind-thrown Timber Disposal*