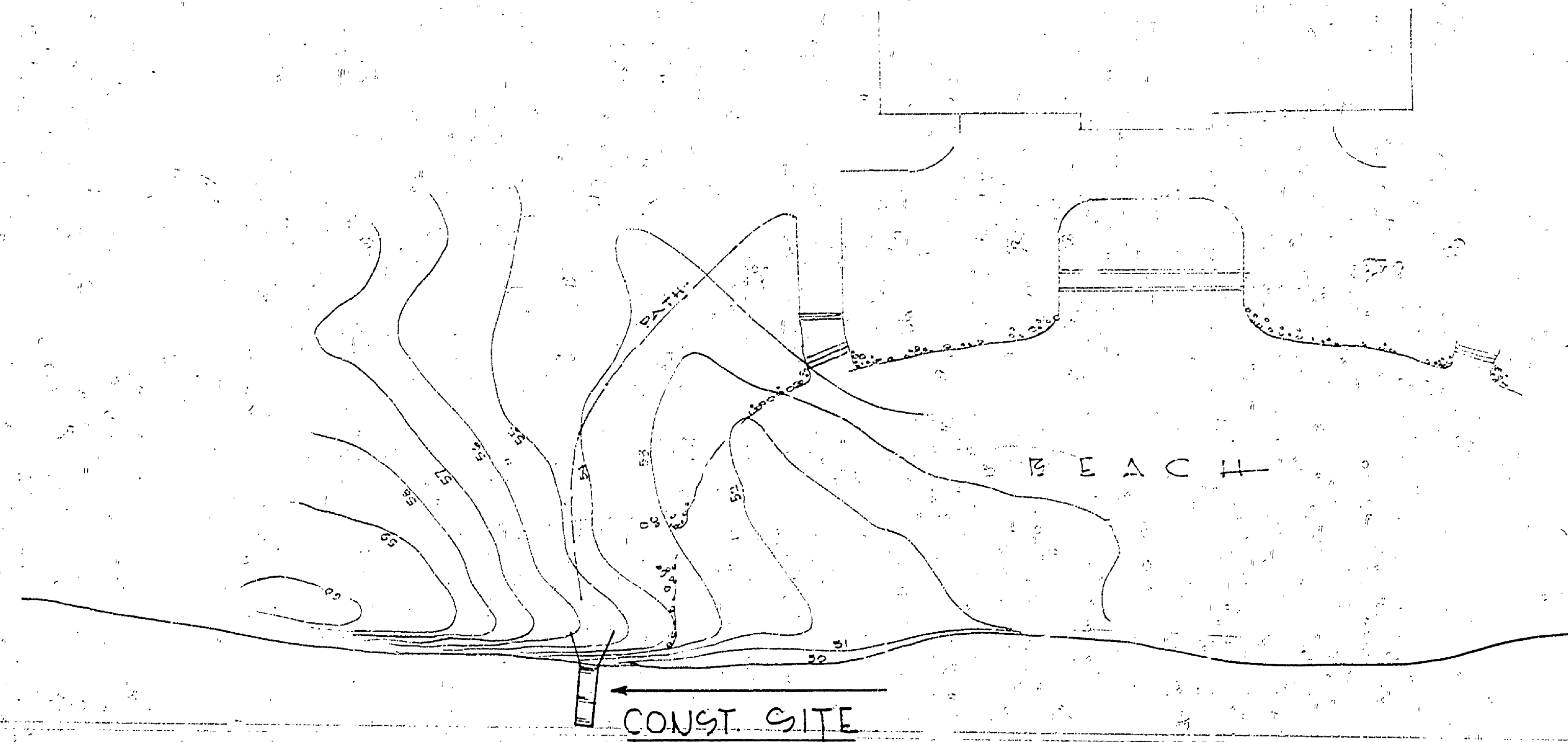
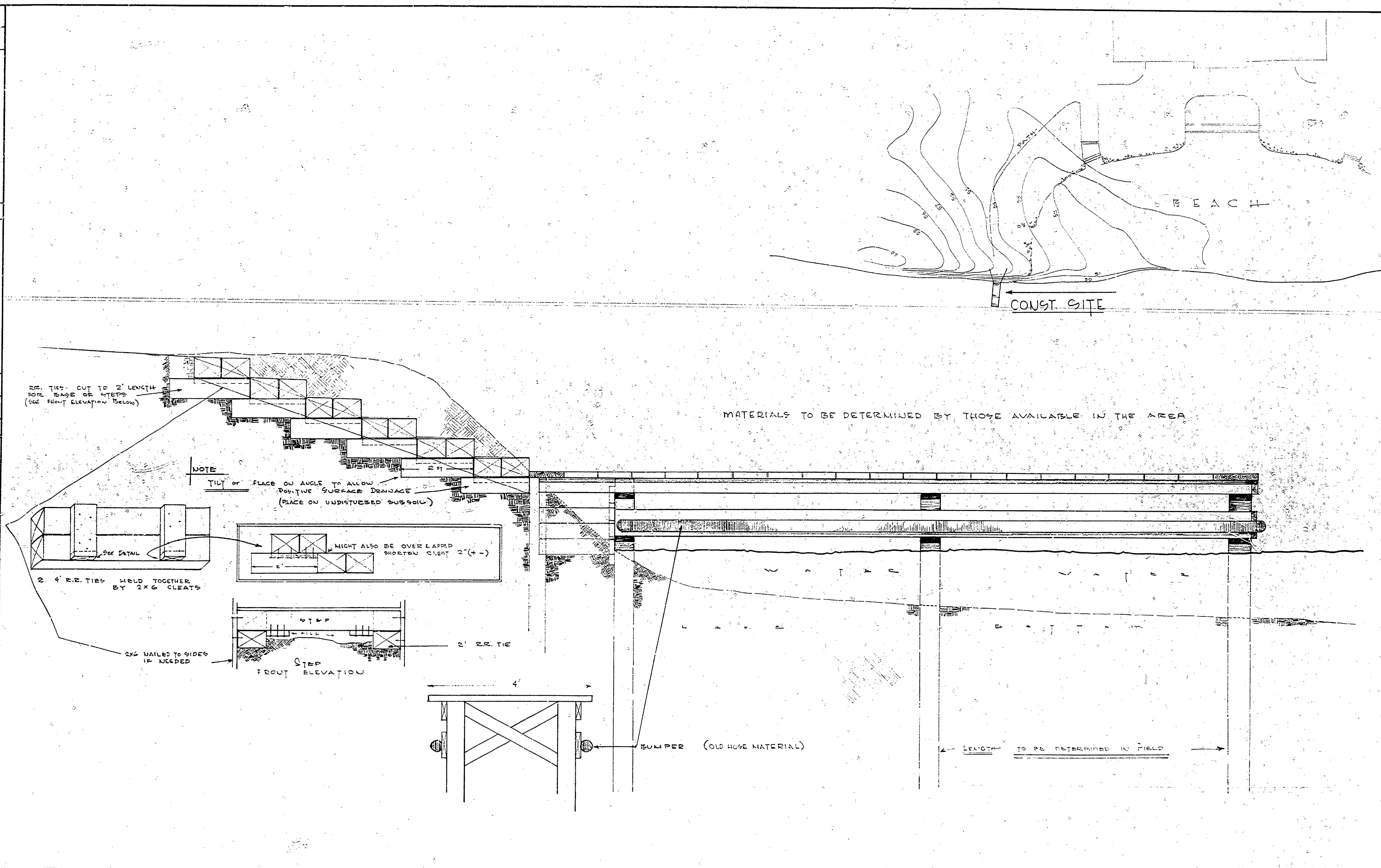


| | | | | | | | | | | | | | | |
|----------------------------------|-----------|------------|------|---------------------------|-------------|-----------|------|-------------|-----|------|----|-----------|---|---|
| DRAWN BY <i>K. M. Burtice</i> | TRACED BY | CHECKED BY | DATE | REVIEWED BY SECTIONS | | | DATE | APPROVED BY | NO. | DATE | BY | REVISIONS | | |
| | | | | ARCHITECTURAL | ENGINEERING | LANDSCAPE | | | | | | 1 | 2 | 3 |
| | | | | ASSISTANT CHIEF IN CHARGE | | | | | | | | | | |
| | | | | DATE | | | | | | | | | | |



MATERIALS TO BE DETERMINED BY THOSE AVAILABLE IN THE AREA

LENGTH TO BE DETERMINED IN FIELD

BUMPER (OLD HOSE MATERIAL)

STEP FRONT ELEVATION

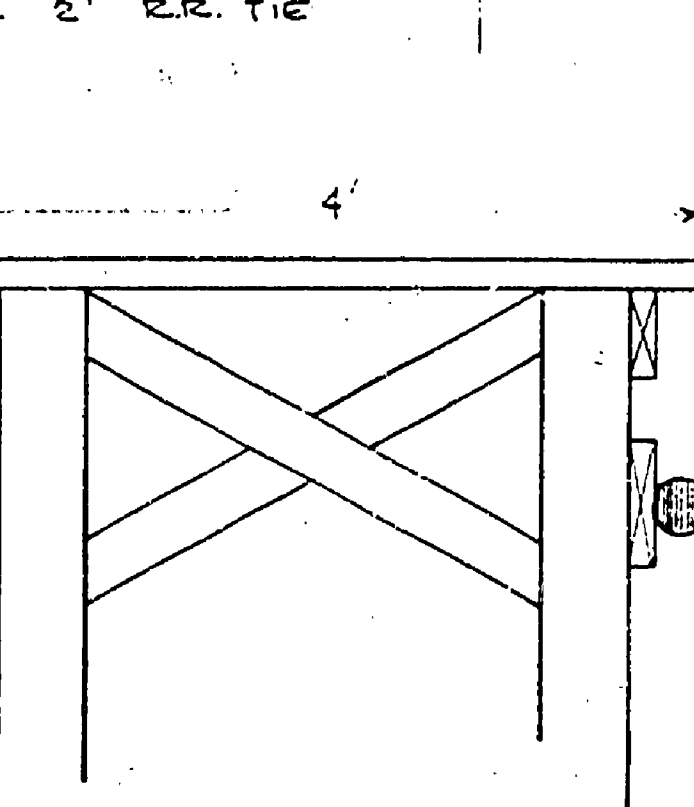
MIGHT ALSO BE OVER LAPPED SHORTEN CLEAT 2" (-)

NOTE
TILT OF PLACE ON ANGLE TO ALLOW POSITIVE SURFACE DRAINAGE (PLACE ON UNDISTURBED SUBSOIL)

REBAR TIES CUT TO 2' LENGTH FOR BASE OF STEPS (SEE FRONT ELEVATION BELOW)

2 4' R.R. TIES HELD TOGETHER BY 2X6 CLEATS

2X6 NAILS TO SIDES IF NEEDED



2' R.R. TIE

MICHIGAN DEPARTMENT OF CONSERVATION PARKS AND RECREATION DIVISION

Y. SPRINGS CONCESS. DOCK

SHEET NO. 1 OF 1

PLAN NO. R-19