

REMONUMENTATION
SECTION 14, BINGHAM TOWNSHIP

JAN 17 1996

LAND CORNER RECORDATION CERTIFICATE
Filing Requirement of Act 74, Mich. P.A. 1970

RECORDED

Nov 9 9 02 AM '95

REGISTER OF DEEDS
CLINTON COUNTY, MICH.

Carol W. Wexler

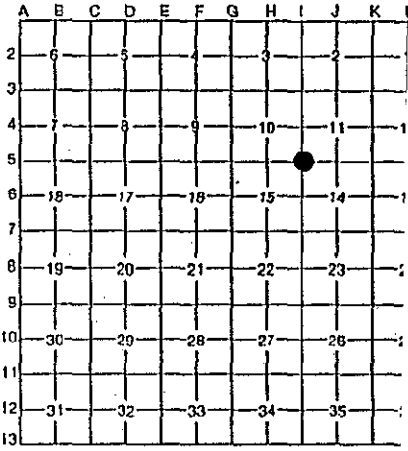
LIBER 4, Page 87

Register of Deeds Stamp & File Number

For corners in Clinton (County) COMMISSION located in: Corner Code #

1. Public Land Survey	T <u>7N</u> R <u>2W</u>	I-5
	T _____ R _____	_____
	T _____ R _____	_____
	T _____ R _____	_____
2. Property Controlling in Section	S _____ T _____ R _____	_____
	S _____ T _____ R _____	_____
3. Miscellaneous Property in Section	S _____ T _____ R _____	_____
	S _____ T _____ R _____	_____

4. Lot No. _____, Recorded Plat _____
 5. Private Claims _____



Arden S. Pierson P.S. in a field survey on August 25, 1995
 do hereby certify that under requirements of P.A. 74, Michigan P.A. of 1970, the corner points mentioned
 in lines 1 and 2 above were in conformance with regulations and rules therefore as required in the current
 manual of survey instructions of the United States Department of the Interior, Bureau of Land
 Management or by a decree of a Court of Law and/or that the corner points mentioned in lines 3, 4 and
 5 above were in conformance with the rules of the Michigan Board of Professional Surveyors or by a
 Decree of a Court of Law; established, re-established, monumented, re-monumented, recovered, found
 as expressed below:

NOTE: Not more than 4 corners, all in the same town and range, may be recorded
 on this certificate.

A. Description of original monument and accessories and/or subsequent restoration:
 Original survey of Bingham Township by C.W. Christmas in 1831.

County surveyor notes by Charles Eddy, dated May 1, 1902.
 NW Corner Section 14, found stone, witnessed by
 18" Elm - S27°E - 87 links.

(OVER)

B. Description of corner evidence found and/or method applied in restoring or reestablishing corner:

Found 1/2" rod in monument box.

Set witnessed irons for corner replacement after reconstruction
 of Highway M-21 (5-05-95). The 1/2" rod is accepted as a careful
 and faithful re-establishment of the position of the original corner.

Set PK Nail & Aluminum Tag for corner position.

Set Standard Clinton County Monument and monument box on October 13,
 1995.

C. Description of monument for corner and accessories established to perpetuate locating the position of the corner:

NW Corner, Section 14

*Standard Clinton County Monument in monument box.

- Nail & Tag #13039 in W. Side Telephone Pole - N03°W - 70.86'
- Nail & Tag #13039 in SW Side Telephone Pole - N65°W - 194.97'
- Nail & Tag #13039 in SW Side Telephone Pole - N76°W - 359.59'
- Nail & Tag #13039 in E. Side Power pole - S02°W - 91.62'

*Standard Clinton County Monument is a 2 1/2" dia. steel tube 30"
 long with a stamped brass cap and a breakaway magnetic base.

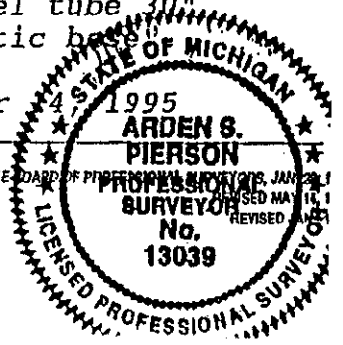
Signed by *Arden S. Pierson*

Date October

Surveyor's Michigan License No. 13039

APPROVED BY
 CLINTON COUNTY PEER GROUP
 DATED 8/30/95

FORM APPROVED BY MICHIGAN STATE BOARD OF PROFESSIONAL SURVEYORS, JAN 28, 1995
 REVISED MAY 1995



8/25/95
10/2/95

LIBER 4, PAGE 88

From LCRC Liber 2, Page 334
By Russell L. Roon, PS 13593

(NW Corner, Section 14, T7N, R2W)
Corner monument destroyed by building Highway M-21.
Set copperweld rod with aluminum cap in monument box.
Set corner on the centerline of M-21 and fence lines
North and South.

N40°W - 60.80' - 7" TW Box Elder
North - 49.91' - Face 4" Steel FE Post
South - 49.91' - Face 4" Steel FE Post