

OCT 26 1995

COMMISSION

Approved by Delta County Land Survey Remonumentation Peer Group Under Act 345 Of P.A. Of 1990 On June 6, 1995  
R. B. Schumaker  
Acting Chairman

LAND CORNER RECORDATION CERTIFICATE  
Filing Requirement of Act 74, Mich. P.A. 1970

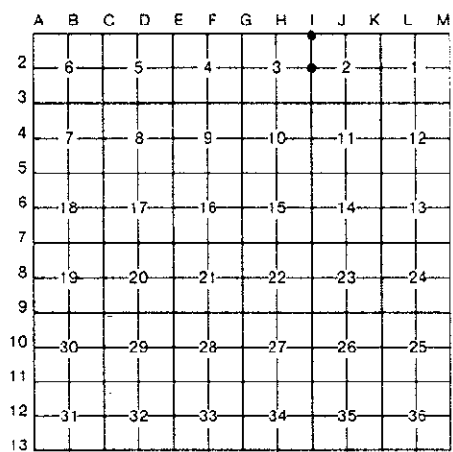
For corners in DELTA (County)

Located In: Corner Code #

Table with 3 columns: Survey Type, Direction (S, T, R), and Corner Code. Includes entries for Public Land Survey, Property Controlling in Section, and Miscellaneous Property in Sec.

Recorded JUN 13 1995 at 9:00 o'clock A.M. in Liber 8 Page 60  
Wallace C. Thoman Reg. of Deeds.  
Delta County, Michigan  
Register of Deeds Stamp & File Number

4. Lot No. , Recorded Plat  
5. Private Claims I-1 [NW COR SEC 2] I-2 [W1/4 COR SEC 2]



I. M.P. DAVIS in a field survey on JANUARY 19 95 do hereby certify that under requirements of P.A. 74, Michigan P.A. of 1970, the corner points mentioned in lines 1 and 2 above were in conformance with regulations and rules therefore as required in the current manual of survey instructions of the United States Department of the Interior, Bureau of Land Management or by a decree of a Court of Law and/or that the corner points mentioned in lines 3, 4 and 5 above were in conformance with the rules of the Michigan Board of Land Surveyors or by a Decree of a Court of Law: established, re-established, monumented, re-monumented, recovered, found as expressed below:

NOTE: Not more than 4 corners, all in the same town and range, may be recorded on this certificate.

A. Description of original monument and accessories and/or subsequent restoration:  
I-1 [NW COR SEC. 2] A. MERRYWEATHER, D.S. - 1848 - WOOD POST (CEDAR 10°E-370°W-11 LINKS) (BIRCH 11°-S30°E-14 LINKS) M.S. McNABB - 1920 - FOUND IRON BOLT IN HWY. - CORNER FENCE POST SE 45.8' & SW 46.4'  
I-2 [W1/4 COR SEC. 2] A. MERRYWEATHER, D.S. - 1848 - WOOD POST (HEMLOCK 12°-S65°E-37 LINKS) (HEMLOCK 9°-N74°W-31 LINKS) M.S. McNABB-1920-ESTABLISHED PROPORTIONATE DISTANCE BETWEEN CORNERS-SET IRON BOLT-FENCE POSTS S68°E-37.7' & N68°W-31.0'

B. Description of corner evidence found and/or method applied in restoring or reestablishing corner:  
I-1 [NW COR SEC. 2] FOUND AT THE APPROXIMATE C/L P.I. OF COUNTY ROADS SOUTH & WEST AN IRON BOLT AS DESCRIBED IN McNABB'S RECORDS. NO EVIDENCE OF HIS FENCE POST BT'S FOUND. DISTANCES TO ADJOINING CORNERS EAST & WEST CHECK WELL WITH THE RECORDS OF McNABB. ACCEPTED EXISTING MONUMENT AS THE BEST AVAILABLE EVIDENCE AS TO THE POSITION OF THE ORIGINAL CORNER.  
I-2 [W1/4 COR SEC. 2] NO EVIDENCE OF McNABB'S 1920 IRON BOLT FOUND. REESTABLISHED CORNER POSITION BY BY SINGLE PROPORTIONATE DISTANCE BETWEEN SEC. CORNERS N & S AS PER McNABB'S 1920 RECORDS. DISTANCE BETWEEN SECTION CORNERS CHECKS WELL WITH THE RECORDS OF McNABB & FITS EXISTING LINES OF OCCUPATION.



C. Description of monument for corner and accessories established to perpetuate locating the position of the corner:  
I-1 SET 4" X 4" X 36" CONCRETE MONUMENT W/A 3" BRASS CAP STAMPED TO ID THE CORNER POSITION.  
CEDAR 5" SPRUCE 5" SURVEY MONUMENT SIGN POST NOTE: NO OTHER WIT'S AVAILABLE  
N69°E S28°E NORTH  
34.10' 56.15' 3.37' (TO FACE)  
I-2 SET, 6" BELOW ROAD SURFACE, A 5/8" X 18" REBAR W/A 3-1/4" ALUMN CAP STAMPED TO ID THE CORNER POSITION.  
POWER POLE SURVEY MONUMENT SIGN POST NOTE: IN FARM AREA. NO OTHER WIT'S AVAILABLE  
S77°W S86°E  
29.04' 22.10' (TO FACE)

NOTE: BEARINGS TO REFERENCE OBJECTS ARE MAGNETIC-DISTANCES ARE TO HAIL W/A DELTA COUNTY REFERENCE TAG, UNLESS OTHERWISE NOTED.

Signed by M.P. Davis Date 4/13/95  
Surveyor's Michigan License No. 16926