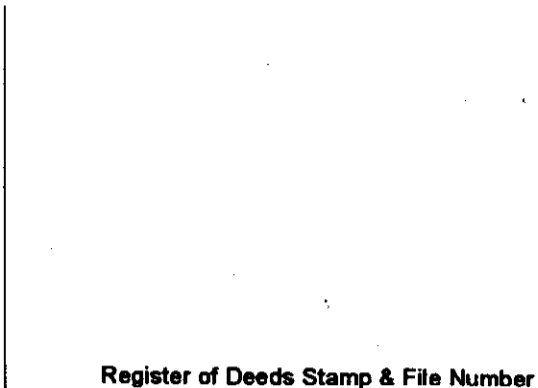


LAND CORNER RECORDATION CERTIFICATE
Filing Requirement of Act 74, Mich. P.A. 1970

For corners in

<u>Houghton</u> (County)	Located In:	Corner Code #
1. Public Land Survey	T 52N R 36W	F7
	T 52N R 36W	F8
	T ___ R ___	___
	T ___ R ___	___
2. Property Controlling in Section	S ___ T ___ R ___	___
	S ___ T ___ R ___	___
3. Miscellaneous Property in Sec.	S ___ T ___ R ___	___
	S ___ T ___ R ___	___

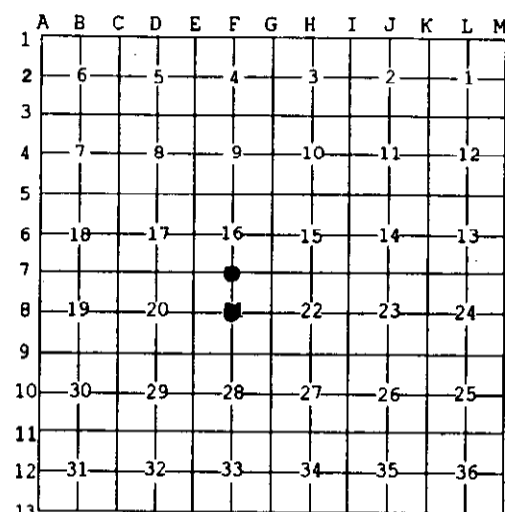


4. Lot No. _____, Recorded Plat _____
 5. Private Claims _____

Jun 26 2002

I, Stephan J. Szyszkoski, in a field survey on _____, 20__ do hereby state that under requirements of P.A. 74, Michigan P.A. of 1970, the corner points mentioned in lines 1 and 2 above were in conformance with regulations and rules therefore as required in the current manual of survey instructions of the United States Department of the Interior, Bureau of Land Management or by a decree of a Court of Law and/or that the corner points mentioned in lines 3, 4 and 5 above were in conformance with the rules of the Michigan Board of Land Surveyors or by a Decree of a Court of Law, established, re-established, monumented, recovered, found as expressed below:

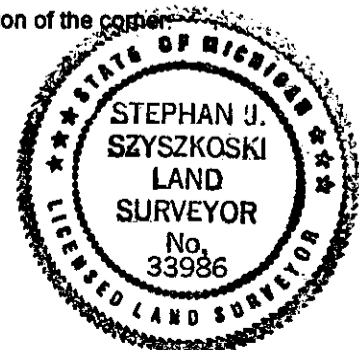
NOTE: Not more than 2 corners, all in the same town and range, may be recorded on this certificate.



- A. Description of original monument and accessories and/or subsequent restoration:**
 (F7) Quarter corner common to Sections 16-21. 1846: Established by S.W. Higgins: "West corrected...40.10 Set 1/4 Sec post. Maple 16 S65E 18, Sugar 13 N60W 28...80.20 Sec cor". Found no subsequent record.
 (F8) Center of Section 21. Not established in the original survey. Found no subsequent record.

- B. Description of corner evidence found and/or method applied in restoring or reestablishing corner:**
 (F7) The original post and accessories were not recovered. The Mean True bearing and length of the line between Section corners E7-G7 is N81 deg. 52' E, 5407.5 (81.93 chains), significantly different from the record. Higgins' notes show 8 stream crossing on this mile and nearly all were recovered and mapped in this survey. Some are only intermittently on the surface, portions being subterranean. I investigated the possibility that this 1/4 corner was "stubbed out" at record bearing and distance from one of the section corners. Several streams fit the record very well along a line due west from G7. But the calls also fit the record nearly as well on a straight line between the section corners. I judged that the stream calls were not sufficient to reestablish the corner and I concluded that the corner is lost. Therefore, I reestablished the corner midway and on a line of Mean True bearing between the section corners, 2703.74' E'ly and W'ly, being proportionate to the original record.
 (F8) Established the corner at the intersection of straight lines connecting opposite 1/4 corners.

- C. Description of monument for corner and accessories established to perpetuate locating the position of the corner:**
- | | |
|---|--|
| (F7) Set 1"IDx32" I.pipe with 4" alum. MDNR cap. Blazed and scribed:
13" Maple N05W 28.5' "1/4S NBT"
13" Maple N46E 15.2' do
15" Maple S40W 6.9' do
4" Sugar N85W 28.6' do
Set sq'd cedar post adjacent. Bearings are magnetic. Distances are to notch in lower blaze. | (F8) Set 1"IDx32" I.pipe with 4" alum. MDNR cap. Blazed and scribed:
7" Y.Birch N08W 37.2' "C1/4 BT"
8" Sugar S72E 27.6' do
14" Y.Birch S64W 13.2' do
17" Sugar N61W 47.4' do
Set sq'd cedar post adjacent. |
|---|--|



Signed by Stephan J. Szyszkoski
 Surveyor's Michigan License No. 33986

Date 7/18/02