

Survey & Remonumentation  
\$7.00  
\$2.00  
MAR 08 1998

SECTION LAND CORNER RECORDATION CERTIFICATE  
Filing Requirement of Act 74, Mich. P.A. 1970  
KENT COUNTY REMONUMENTATION

For corners in Kent (County) Located in: Grattan Township Corner Code #

1. Public Land Survey	T 8N R 9W	D-5E
	T R	Witness Monument
	T R	
	T R	
2. Property Controlling in Section	S T R	
	S T R	
3. Miscellaneous Property in Sec.	S T R	
	S T R	

4. Lot No. , Recorded Plat

5. Private Claims

other code #1 Sep #2  
REG. OF DEEDS  
OCT 23 AM 9:58  
10844  
Register of Deeds Stamp & File Number

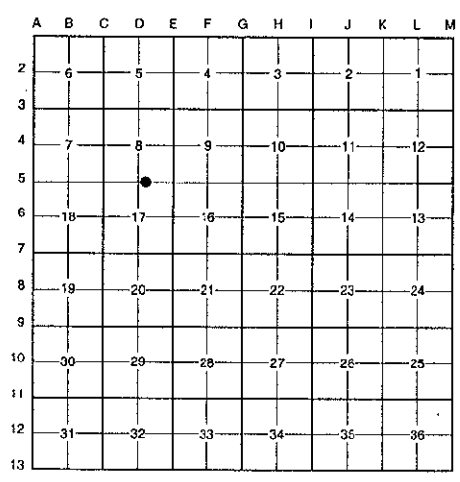
I, Randy Kolehouse, in a field survey on March 30 19 98, do hereby certify that under requirements of P.A. 74 Michigan P.A. of 1970, the corner points mentioned in lines 1 and 2 above were in conformance with regulations and rules therefore as required in the current manual of survey instructions of the United States Department of the Interior, Bureau of Land Management or by a decree of a Court of Law and/or that the corner points mentioned in lines 3, 4 and 5 above were in conformance with the rules of the Michigan Board of Land Surveyors or by a Decree of a Court of Law; established, re-established, monumented, re-monumented, recovered, found as expressed below:

NOTE: Not more than 4 corners, all in the same town and range, may be recorded on this certificate.

A. Description of original monument and accessories and/or subsequent restoration:

D-5 This corner was not originally set by the G.L.O.

1972	Cert. Survey L. 1 P. 50	Moore & Bruggink	Iron
1993	L.C.R.C. #6774	T. Starr	Fnd. Iron / Set K.C. Witness Monument
1994	L.C.R.C. #8000	Glaza & Associates	K.C. Witness Monument



This corner was originally approved by the Kent County Remonumentation Peer Group and monumented by Thomas Starr on 3/15/93 and was recorded per L.C.R.C. #6774.

B. Description of corner evidence found and/or method applied in restoring or reestablishing corner:

D-5 Found a Standard Kent County Witness Monument 6' ± West of the East edge of Toohey Lake (in water 1' deep) per L.C.R.C.'s #6774 and #8000 as set by Tom Starr in place of an iron he found which checked a 1972 survey by Moore & Bruggink.

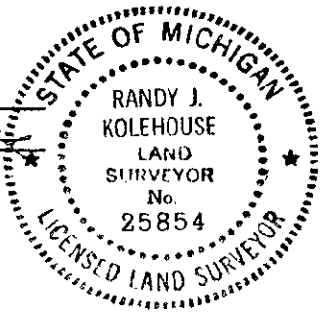
L.C.R.C. #6774	L.C.R.C. #8000
Nail & Tag in E. side 8" Ash N 07° W 3.27'	Nail & K.C. remon tag in E side 10" Ash N 07° W 3.20' (m. 3.17')
Nail & Tag in E. side 6" Poplar S 73° W 10.55'	Nail & K.C. remon tag in E side 6" Poplar S 73° W 10.57' (m. 10.59')
Nail & Tag in W. side 28" Pine S 36° E 7.52'	Nail & K.C. remon tag in W side 25" Pine S 36° E 7.55' (m. 7.59')
Nail & Tag in S. side 8" Pine N 76° E 22.81'	Nail & K.C. remon tag in S side 8" Pine N 76° E 22.75' (m. 22.77')
Nail & Tag in S. side 4" Poplar N 57° E 18.28'	Nail & K.C. remon tag in S side 8" Poplar N 57° E 18.25' (m. 18.26')

The selected location is accepted by me and is generally accepted by professional surveyors as the best available evidence of the position of the original corner.

C. Description of monument for corner and accessories established to perpetuate locating the position of the corner:

D-5 Standard Kent County Witness Monument

Nail & K.C. remon. tag on E side 10" Ash N 07° W 3.17'	P.A. 345 1990 KENT COUNTY
Nail & K.C. remon. tag on E side 6" Poplar S 73° W 10.59'	PEER APPROVED 6/25/98
Nail & K.C. remon. tag on W side 26" Pine S 36° E 7.59'	CHAIRMAN Randy Kolehouse
Nail & K.C. remon. tag on S side 8" Pine N 76° E 22.77'	
Nail & K.C. remon. tag on S side 8" Poplar N 57° E 18.26'	
East edge of Toohey Lake, East 6'	



Signed by Randy J. Kolehouse Date 9-1-98  
EARTH TECH  
Surveyor's Michigan License No. 25854