

MAY 22 2000

KENT COUNTY REMONUMENTATION

SECTION

LAND CORNER RECORDATION CERTIFICATE
Filing Requirement of Act 74, Mich. P.A. 1970\$7.00
\$2.00other
corner #5

REC. OFFERS

STATE OF MICHIGAN
COUNTY OF KENT
RECEIVED FOR RECORD
1999 JUL -9 AM 11:19

For corners in

KENT COUNTY

(County)

Located In:

Corner Code #

1. Public Land Survey

T___ R___
T___ R___
T___ R___
T___ R___2. Property Controlling
in Section

S___2 T___10N R___11W

Wil Mon on

3. Miscellaneous
Property in Sec.

S___ T___ R___

N-S 1/4 Line

4. Lot No. _____, Recorded Plat _____

5. Private Claims _____

I, Kirk Breitels, in a field survey on June 1, 1999 do hereby state that under requirements of P.A. 74, Michigan P.A. of 1970, the corner points mentioned in lines 1 and 2 above were in conformance with regulations and rules therefore as required in the current manual of survey instructions of the United States Department of the Interior, Bureau of Land Management or by a decree of a Court of Law and/or that the corner points mentioned in lines 3, 4 and 5 above were in conformance with the rules of the Michigan Board of Land Surveyors or by a Decree of a Court of Law; established, re-established, monumented, recovered, found as expressed below:

NOTE: Not more than 2 corners, all in the same town and range, may be recorded on this certificate.

A. Description of original monument and accessories and/or subsequent restoration:

1837	GLO	Cathcart	Not Set
1993	LCRC #6807	W. Glaza	Set Kent Co. Witness Monument on N-S 1/4 Line 1479.20' South of the Central 1/4 corner of Sec. 2

The position of this corner was previously approved by the Kent County Remonumentation Peer Group, as monumented by Wallace E. Glaza on 8-17-93 and was recorded per LCRC #6807

B. Description of corner evidence found and/or method applied in restoring or reestablishing corner:

Found Kent Co. Witness Monument per witnesses of above LCRC as set by Wallace E. Glaza.

Nail & KC Remon. tag NW side 10" Poplar	N38°E 9.18'
Nail & KC Remon. tag E. side 18" Elm	S08°E 30.72'
Nail & KC Remon. tag SE side clump Maple	S48°W 47.58'
Nail & KC Remon. tag S. side 10" Poplar	S75°W 12.68'
Nail & KC Remon. tag W. side 10" Poplar	S27°W 9.90'

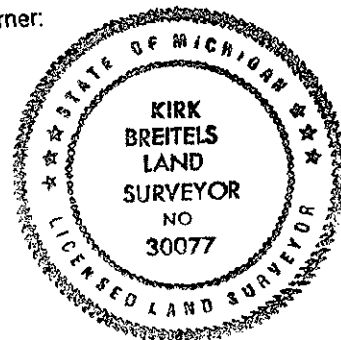
South edge of field is North 20' ±

The above location is accepted by me and is generally accepted by professional surveyors as the best available evidence of the position of the Witness Corner.

C. Description of monument for corner and accessories established to perpetuate locating the position of the corner:

Kent County Witness Monument	
Nail & KC Remon. tag NW side 10" stump	N38°E 9.14'
Nail & KC Remon. tag E. side 20" Elm	S08°E 30.70'
Nail & KC Remon. tag SE side clump Maple	S48°W 47.58'
Nail & KC Remon. tag S. side 12" Poplar	S75°W 12.64'
Nail & KC Remon. tag W. side 14" Poplar	S27°W 9.93'
South edge of field is North 20' ±	

P.A. 345 1990 KENT COUNTY
PEER APPROVED 6/24/99
CHAIRMAN Harold Huber



Signed by

Date

6/24/99

Surveyor's Michigan License No.

30077