

MICHIGAN
DEPARTMENT OF CONSERVATION
FORESTRY DIVISION

LAND CORNER RECORD

T. 44-45 N.R. 30W

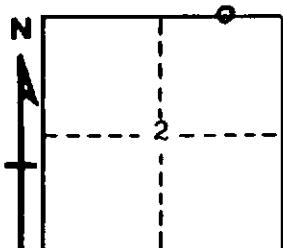
Marquette-Dickinson COUNTY

DESCRIPTION OF CORNER E 1/16 corner between 2 & 35

CORNER MONUMENT 4" x 4" x 6' squared cedar post scribed "E 1/16 S, 1/16 S, 2, 35"

DATE MONUMENT PLACED AND WITNESSED July 29, 1968

WITNESSES TO CORNER..... Cedar 7 809 1/2 W 16 1/2 lks. "1/16 S BT"



Cedar 6 S30 1/2 E 16 1/2 lks. "1/16 S BT"

AND

CIRCLE CORNER REGISTERED

DESCRIPTION IN DETAIL AS TO HOW CORNER WAS LOCATED AND IDENTIFIED OR RESTORED.

This corner was established midway on line between the 1/4 corner 20.00 chains west and Sec. Cor. 20.00 chains east, as previously established by proportionate measurement. Corner is in a cedar-spruce swamp.

No evidence that a corner ever was set here, but found very old E & W blases on a tamarack stub a few links SE of post.

SURVEYOR'S SEAL

SIGNED Arthur O. Enger DATE 9/4/68
REGISTERED LAND SURVEYOR