

SURVEY & REMONUMENTATION

APR 11 1995

LAND CORNER RECORDATION CERTIFICATE

For corners in
MENOMINEE
(County)

COMMISSION

Filing Requirement of Act 74, Mich. P.A. 1970

Approved by Menominee County
Land Survey Remonumentation
Peer Group Under Act 345 Of

P.A. Of 1990 On Dec 16 1994
W. Lenca RLS
ACTING

	Located In:	Corner Code #
1. Public Land Survey	T <u>32NR</u> <u>27W</u>	<u>D-09</u>
	T _____ R _____	_____
	T _____ R _____	_____
	T _____ R _____	_____
2. Property Controlling in Section	S _____ T _____ R _____	_____
	S _____ T _____ R _____	_____
3. Miscellaneous Property in Sec.	S _____ T _____ R _____	_____
	S _____ T _____ R _____	_____

RECEIVED FOR RECORD
94 DEC 27 AM 10:49
PAGE # 203 B44
BARBARA MORRISON
REGISTER OF DEEDS
MENOMINEE, MI 49825

Register of Deeds Stamp & File Number

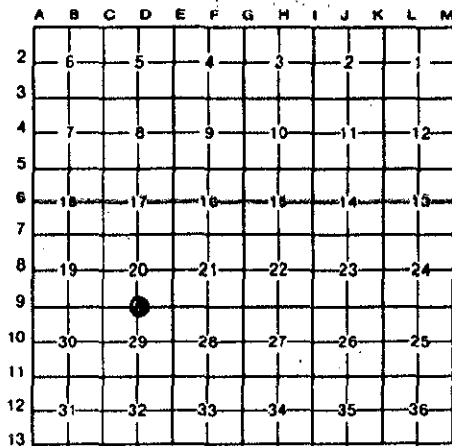
4. Lot No. _____, Recorded Plat _____
5. Private Claims _____

William Lenca

May 31

94

I, _____, in a field survey on _____, 19 _____, do hereby certify that under requirements of P.A. 74, Michigan P.A. of 1970, the corner points mentioned in lines 1 and 2 above were in conformance with regulations and rules therefore as required in the current manual of survey instructions of the United States Department of the Interior, Bureau of Land Management or by a decree of a Court of Law and/or that the corner points mentioned in lines 3, 4 and 5 above were in conformance with the rules of the Michigan Board of Land Surveyors or by a Decree of a Court of Law; established, re-established, monumented, re-monumented, recovered, found as expressed below:



NOTE: Not more than 4 corners, all in the same town and range, may be recorded on this certificate.

A. Description of original monument and accessories and/or subsequent restoration:

- 1847: Original Survey by James H. Mullett - B.T.'s - Birch, 12", S05°E, 16 lks; Pine, 24", N39°W, 08 lks. All original evidence for this corner has been destroyed by county road improvements.
- 1884: Survey by Orson Burlingame, surveyor, showing partial subdivision of Section 20. Shows the corner position as being M.P.O.L. The distances to section corners East and West is 2785'. The corner monument is not described and no B.T.'s are given.
- 1981: Certified Survey No. 270 by George B. Wilson, RLS No. 17607, shows this corner in a subdivision of Section 29, T32N-R27W. The corner monument is not described.
- 1982: L.C.R.C. No. 383 by George B. Wilson, RLS No. 17607, describes this corner as a W-1-B Berntsen Monument. He states that the corner was reset from old fence line to the North and South. TIES: Magnet - NW - 53.0°; Magnet - SW - 51.4°.

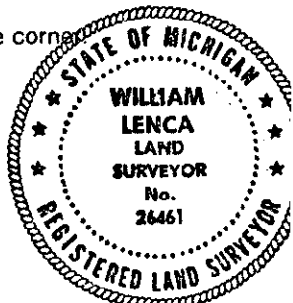
B. Description of corner evidence found and/or method applied in restoring or reestablishing corner:

We found a W-1-B Berntsen Monument (Cast aluminum monument 30" long with 4" diameter Aluminum cap) in the North Lane of an East-West County Road, in line with Section Corners 1/2 mile to the East and West and in line with ancient fence lines running North and South from this location. Wilson's measurement to the section corner 1/2 mile west is 2802.99 feet, compared to Burlingame's measurement of 2785 feet. Wilson's measurement to the section corner 1/2 mile east is 2774.94 feet, compared to Burlingame's measurement of 2785 feet. Although Wilson's position for this corner does not fall midway between the section corners as Burlingame's record indicates, his corner does fall in line with an old fence which has been in existence and accepted for approximately 90 years. This corner position has been used for several surveys in Sections 20 and 29 over the past 13 years, and is accepted as the best available evidence of the position of the original corner.

C. Description of monument for corner and accessories established to perpetuate locating the position of the corner:

Set Monument Box over existing W-1-B Berntsen Monument:

5/8" x 24" Iron Rod/2" cap marked WITNESS MARKER	S60°W	85.68 feet
NW Corner of Residence Foundation	S30°E	84.02 feet
5/8" x 24" Iron Rod/2" cap marked WITNESS MARKER	N53°W	46.60 feet
5/8" x 24" Iron Rod/Ident. cap marked MI 26461/WI 1569	N01°W	32.98 feet
Survey Sign Post	N01°W	33.2 feet



NOTE: All bearings are magnetic bearings. All distances are measured with steel tape. Distances to trees are to nail in side of tree.

Signed by William Lenca

Date Dec. 07, 1994

Surveyor's Michigan License No. 26461