

LAND CORNER RECORDATION CERTIFICATE
Filing Requirement of Act 74, Mich. P.A. 1970

For corners in
MISSAUKEE

(County)

Located In:

Corner Code ##

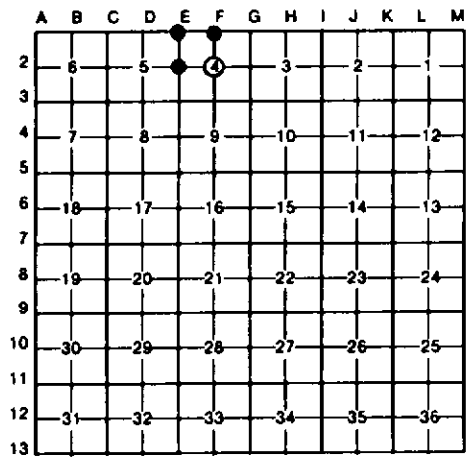
filed 7-24-89

1. Public Land Survey	T <u>21N</u> R <u>5W</u>	<u>E-1</u>
	T _____ R _____	<u>E-2</u>
	T _____ R _____	<u>F-1</u>
	T _____ R _____	<u>F-2</u>
2. Property Controlling in Section	S _____ T _____ R _____	_____
	S _____ T _____ R _____	_____
3. Miscellaneous Property in Sec.	S _____ T _____ R _____	_____
	S _____ T _____ R _____	_____

Register of Deeds Stamp & File Number

4. Lot No. _____, Recorded Plat _____
 5. Private Claims _____

I, CARL F. ROSER, in a field survey on APRIL 16, 19 87, do hereby certify that under requirements of P.A. 74, Michigan P.A. of 1970, the corner points mentioned in lines 1 and 2 above were in conformance with regulations and rules therefore as required in the current manual of survey instructions of the United States Department of the Interior, Bureau of Land Management or by a decree of a Court of Law and/or that the corner points mentioned in lines 3, 4 and 5 above were in conformance with the rules of the Michigan Board of Land Surveyors or by a Decree of a Court of Law; established, re-established, monumented, re-monumented, recovered, found as expressed below:



NOTE: Not more than 4 corners, all in the same town and range, may be recorded on this certificate.

A. Description of original monument and accessories and/or subsequent restoration:

E-1	E-2	F-1	F-2
FD 1 1/2" PIPE FOR COR COMMON TO SEC'S. 4 & 5, T21N-R5W & SEC'S. 32 & 33, T22N-R5W; IN INTERSEC OF BRVL RDS. N-S-E-W. COR USED BY L.S. H. MCCLUNG IN 1979 SURVEY.	FD IR; FITS E.A. BEUTHIEN 1914 WITS, C.F.P. 12'; W 22.4', FOR W 1/4 S-4. FD NEW COR FM POST (LEANING) & OLD LARGE COR POST (DOWN), HARD TO TELL EXACTLY WHERE BOTTOM WAS, GROUND VERY ROCKY, N80°W 22.3'.	FD L. CAVANAGH REROD FOR 1/4 COR COMMON TO S-4, T21N-R5W & S-33, T22N-R5W; IN CTR E-W BRVL RD. OLD FM'S TO N & S ARE 6'+ WEST.	ESTAB'D CTR OF S-4 AT INTERSEC OF 1/4 LINES. THIS FITS L. CAVANAGH 1976 SUR OF S-4. FD POST HOLE, STONES & 2 PINE STP WITS PER E.A. BEUTHIEN 1907 SUR N36°31'W, 12.40'; THIS COR NOT ACCEPTED SINCE E.A.B. STATED HE DID NOT RUN S 1/2 OF N-S 1/4 LINE.

C. Description of monument for corner and accessories established to perpetuate locating the position of the corner:

E-1	E-2	F-1	F-2
FD 1 1/2" PIPE (BURIED 0.3)	FD 3/4" X 1 3/4" IR BAR; RAISED W/ 3/8" S.BPK.	FD REROD W/RLS CAP #17614 (BURIED 0.4)	DROVE 5/8" X 3/4" REROD W/RLS CAP. SET CED POST W/LOC TAG.
* P. POLE N45°E 69.03'	4" MAPLE S60°W 35.81'	P. POLE N46°W 79.66'	4" W PINE N30°W 31.3'
* 10" MAPLE CLP-4 S30°E 57.10'	NEW COR FM POST N80°W 22.30'	FM POST N70°E 69.50'	5" OAK N27°E 21.7'
COR FM POST N40°W 48.66'	12" W PINE N50°E 72.12'	7" R PINE S52°W 87.05'	4" MAPLE S52°W 12.7'
SET CED POST	P. POLE S20°E 83.45'	REROD W/RLS CAP SOUTH 32.95'	16" W PINE STP S40°E 14.8'
W/LOC TAG S45°E 47.50'	SET CED POST W/LOC TAG EAST 33'	SET CED POST W/LOC TAG SOUTH 33'	CTR N-S WINDING TRAIL DUE W 152'±5'
* H. MCCLUNG WITS.	CTR N-S BRVL RD EAST 3'±		

Signed by Carl F. Roser 10-25-88 Date _____
 Surveyor's Michigan License No. 12028

FORM APPROVED BY MICHIGAN STATE BOARD OF LAND SURVEYORS, JAN. 28, 1971
 REVISED MAY 14, 1975
 REVISED JAN., 1983

